

Product Name: WAVE4 Rabbit Polyclonal Antibody
Catalog #: APRab19868



Summary

Production Name	WAVE4 Rabbit Polyclonal Antibody
Description	Rabbit Polyclonal Antibody
Host	Rabbit
Application	IHC,ELISA
Reactivity	Human,Rat,Mouse

Performance

Conjugation	Unconjugated
Modification	Unmodified
Isotype	IgG
Clonality	Polyclonal
Form	Liquid
Storage	Store at 4°C short term. Aliquot and store at -20°C long term. Avoid freeze/thaw cycles.
Buffer	Liquid in PBS containing 50% glycerol, 0.5% BSA and 0.02% New type preservative N.
Purification	Affinity purification

Immunogen

Gene Name	WASF4
Alternative Names	
Gene ID	644739.0
SwissProt ID	Q8IV90.The antiserum was produced against synthesized peptide derived from human WASF4. AA range:190-239

Application

Dilution Ratio	IHC 1:100-1:300 ELISA: 1:10000
Molecular Weight	68kD

Background

WASF4P (WAS protein family member 4, pseudogene) is a pseudogene belonging to the family of genes encoding Wiskott-

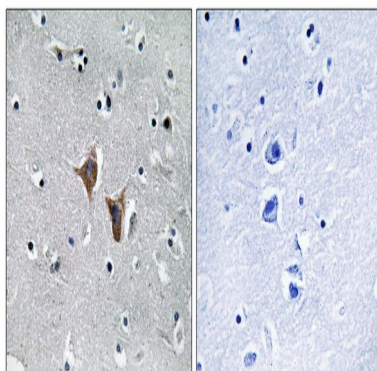
Product Name: WAVE4 Rabbit Polyclonal Antibody
Catalog #: APRab19868



Aldrich syndrome (WAS) proteins, which are involved in the transmission of signals to the actin cytoskeleton. Wiskott-Aldrich syndrome is a disease of the immune system. This pseudogene, which is apparently not transcribed, most closely resembles WASF4P encoding the WAS protein family member 2, which is located on chromosome 1.

Research Area

Image Data



Immunohistochemistry analysis of paraffin-embedded human brain, using WASF4 Antibody. The picture on the right is blocked with the synthesized peptide.

Note

For research use only.