

**Product Name: WAVE3 Rabbit Polyclonal Antibody**  
**Catalog #: APRab19867**



## Summary

<b>Production Name</b>	WAVE3 Rabbit Polyclonal Antibody
<b>Description</b>	Rabbit Polyclonal Antibody
<b>Host</b>	Rabbit
<b>Application</b>	WB,IHC,ELISA
<b>Reactivity</b>	Human,Mouse

## Performance

<b>Conjugation</b>	Unconjugated
<b>Modification</b>	Unmodified
<b>Isotype</b>	IgG
<b>Clonality</b>	Polyclonal
<b>Form</b>	Liquid
<b>Storage</b>	Store at 4°C short term. Aliquot and store at -20°C long term. Avoid freeze/thaw cycles.
<b>Buffer</b>	Liquid in PBS containing 50% glycerol, 0.5% BSA and 0.02% New type preservative N.
<b>Purification</b>	Affinity purification

## Immunogen

<b>Gene Name</b>	WASF3
<b>Alternative Names</b>	WASF3; KIAA0900; SCAR3; WAVE3; Wiskott-Aldrich syndrome protein family member 3; WASP family protein member 3; Protein WAVE-3; Verprolin homology domain-containing protein 3
<b>Gene ID</b>	10810.0
<b>SwissProt ID</b>	Q9UPY6.The antiserum was produced against synthesized peptide derived from human WASF3. AA range:151-200

## Application

<b>Dilution Ratio</b>	WB 1:500 - 1:2000. IHC 1:100 - 1:300. ELISA: 1:10000..
<b>Molecular Weight</b>	55kD

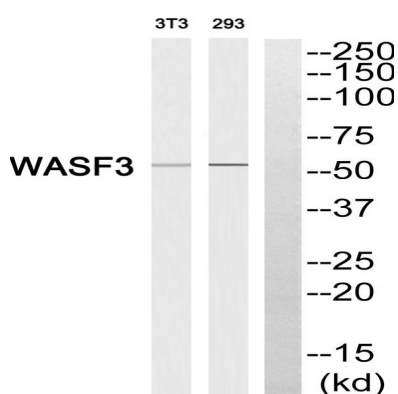
## Background

This gene encodes a member of the Wiskott-Aldrich syndrome protein family. The gene product is a protein that forms a multiprotein complex that links receptor kinases and actin. Binding to actin occurs through a C-terminal verprolin homology domain in all family members. The multiprotein complex serves to transduce signals that involve changes in cell shape, motility or function. A pseudogene of this gene have been defined on chromosome 6. Alternative splicing results in multiple transcript variants [provided by RefSeq, May 2014], domain: Binds the Arp2/3 complex through the C-terminal region and actin through verprolin homology (VPH) domain., function: Downstream effector molecules involved in the transmission of signals from tyrosine kinase receptors and small GTPases to the actin cytoskeleton., similarity: Belongs to the SCAR/WAVE family., similarity: Contains 1 WH2 domain., subunit: Binds actin and the Arp2/3 complex., tissue specificity: Expressed in ovary and brain.,

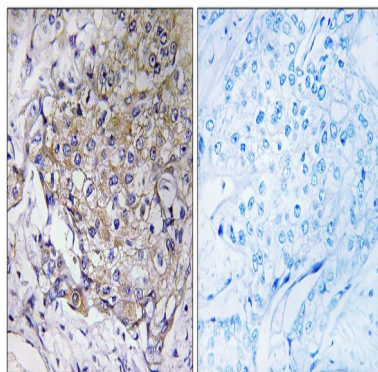
## Research Area

Adherens\_Junction; Fc gamma R-mediated phagocytosis;

## Image Data



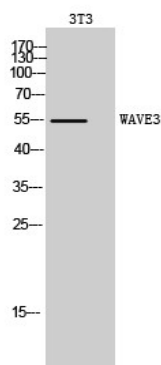
Western blot analysis of WASF3 Antibody. The lane on the right is blocked with the WASF3 peptide.



Immunohistochemistry analysis of paraffin-embedded human breast carcinoma tissue, using WASF3 Antibody. The picture on the right is blocked with the synthesized peptide.

**Product Name: WAVE3 Rabbit Polyclonal Antibody**  
**Catalog #: APRab19867**

---



Western Blot analysis of 3T3 cells using WAVE3 Polyclonal Antibody. Secondary antibody was diluted at 1:20000

### **Note**

For research use only.