

Product Name: VPS26B Rabbit Polyclonal Antibody
Catalog #: APRab19831



Summary

Production Name	VPS26B Rabbit Polyclonal Antibody
Description	Rabbit Polyclonal Antibody
Host	Rabbit
Application	WB,ELISA
Reactivity	Human,Mouse

Performance

Conjugation	Unconjugated
Modification	Unmodified
Isotype	IgG
Clonality	Polyclonal
Form	Liquid
Storage	Store at 4°C short term. Aliquot and store at -20°C long term. Avoid freeze/thaw cycles.
Buffer	Liquid in PBS containing 50% glycerol, 0.5% BSA and 0.02% New type preservative N.
Purification	Affinity purification

Immunogen

Gene Name	VPS26B
Alternative Names	VPS26B; Vacuolar protein sorting-associated protein 26B; Vesicle protein sorting 26B
Gene ID	112936.0
SwissProt ID	Q4G0F5.The antiserum was produced against synthesized peptide derived from human VPS26B. AA range:231-280

Application

Dilution Ratio	WB 1:500 - 1:2000. ELISA: 1:10000
Molecular Weight	45kD

Background

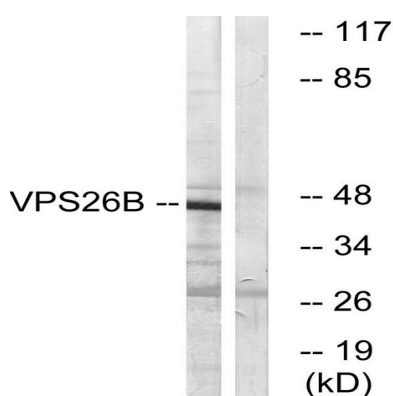
Product Name: VPS26B Rabbit Polyclonal Antibody
Catalog #: APRab19831



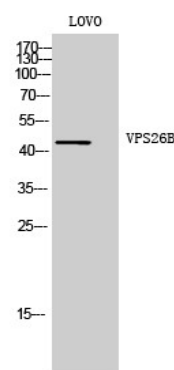
function:Probable component of the retromer complex, a complex required to retrieve lysosomal enzyme receptors (IGF2R and M6PR) from endosomes to the trans-Golgi network.,PTM:Phosphorylated upon DNA damage, probably by ATM or ATR.,similarity:Belongs to the VPS26 family.,subcellular location:Does not localize to endosomes.,subunit:Probable component of the retromer complex composed of VPS26 (VPS26A or VPS26B), VPS29, VPS35, SNX1 and SNX2. Interacts directly with VPS35.,function:Probable component of the retromer complex, a complex required to retrieve lysosomal enzyme receptors (IGF2R and M6PR) from endosomes to the trans-Golgi network.,PTM:Phosphorylated upon DNA damage, probably by ATM or ATR.,similarity:Belongs to the VPS26 family.,subcellular location:Does not localize to endosomes.,subunit:Probable component of the retromer complex composed of VPS26 (VPS26A or VPS26B), VPS29, VPS35, SNX1 and SNX2. Interacts directly with VPS35.,

Research Area

Image Data



Western blot analysis of lysates from LOVO cells, using VPS26B Antibody. The lane on the right is blocked with the synthesized peptide.



Western Blot analysis of LOVO cells using VPS26B Polyclonal Antibody. Secondary antibody was diluted at 1:20000

Product Name: VPS26B Rabbit Polyclonal Antibody
Catalog #: APRab19831



Note

For research use only.