

Product Name: VEGFR2 Rabbit Polyclonal Antibody
Catalog #: APRab19777



Summary

Production Name	VEGFR2 Rabbit Polyclonal Antibody
Description	Rabbit Polyclonal Antibody
Host	Rabbit
Application	IHC,ELISA
Reactivity	Human

Performance

Conjugation	Unconjugated
Modification	Unmodified
Isotype	IgG
Clonality	Polyclonal
Form	Liquid
Storage	Store at 4°C short term. Aliquot and store at -20°C long term. Avoid freeze/thaw cycles.
Buffer	Liquid in PBS containing 50% glycerol, 0.5% BSA and 0.02% New type preservative N.
Purification	Affinity purification

Immunogen

Gene Name	KDR FLK1 VEGFR2
Alternative Names	Vascular endothelial growth factor receptor 2 (VEGFR-2;EC 2.7.10.1;Fetal liver kinase 1;FLK-1;Kinase insert domain receptor;KDR;Protein-tyrosine kinase receptor flk-1;CD antigen CD309)
Gene ID	3791.0
SwissProt ID	P35968.Synthetic peptide from human protein at AA range: 1268-1341

Application

Dilution Ratio	IHC: 1:100-300 ELISA: 1:20000
Molecular Weight	

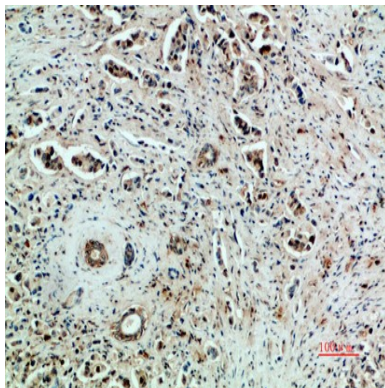
Background

Vascular endothelial growth factor (VEGF) is a major growth factor for endothelial cells. This gene encodes one of the two receptors of the VEGF. This receptor, known as kinase insert domain receptor, is a type III receptor tyrosine kinase. It functions as the main mediator of VEGF-induced endothelial proliferation, survival, migration, tubular morphogenesis and sprouting. The signalling and trafficking of this receptor are regulated by multiple factors, including Rab GTPase, P2Y purine nucleotide receptor, integrin $\alpha V\beta 3$, T-cell protein tyrosine phosphatase, etc.. Mutations of this gene are implicated in infantile capillary hemangiomas. [provided by RefSeq, May 2009], catalytic activity: ATP + a [protein]-L-tyrosine = ADP + a [protein]-L-tyrosine phosphate., function: Receptor for VEGF or VEGFC. Has a tyrosine-protein kinase activity. The VEGF-kinase ligand/receptor signaling system plays a key role in vascular development and regulation of vascular permeability. In case of HIV-1 infection, the interaction with extracellular viral Tat protein seems to enhance angiogenesis in Kaposi's sarcoma lesions., similarity: Belongs to the protein kinase superfamily. Tyr protein kinase family., similarity: Belongs to the protein kinase superfamily. Tyr protein kinase family. CSF-1/PDGF receptor subfamily., similarity: Contains 1 protein kinase domain., similarity: Contains 7 Ig-like C2-type (immunoglobulin-like) domains., subunit: Interacts with MYOF (By similarity). Interacts with SHB; upon VEGF activation. Interacts with HIV-1 Tat.,

Research Area

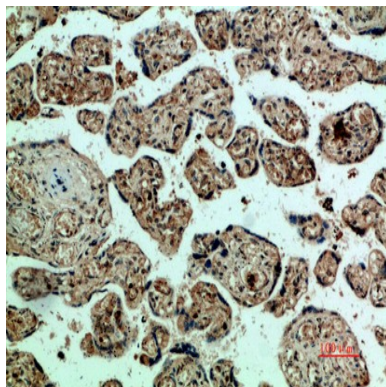
Cytokine-cytokine receptor interaction; Endocytosis; VEGF; Focal adhesion;

Image Data



Immunohistochemical analysis of paraffin-embedded human-breast-cancer, antibody was diluted at 1:200

Product Name: VEGFR2 Rabbit Polyclonal Antibody
Catalog #: APRab19777



Immunohistochemical analysis of paraffin-embedded human-placenta, antibody was diluted at 1:200

Note

For research use only.