

Product Name: USP50 Rabbit Polyclonal Antibody
Catalog #: APRab19686



Summary

Production Name	USP50 Rabbit Polyclonal Antibody
Description	Rabbit Polyclonal Antibody
Host	Rabbit
Application	WB,IHC,ELISA
Reactivity	Human,Mouse

Performance

Conjugation	Unconjugated
Modification	Unmodified
Isotype	IgG
Clonality	Polyclonal
Form	Liquid
Storage	Store at 4°C short term. Aliquot and store at -20°C long term. Avoid freeze/thaw cycles.
Buffer	Liquid in PBS containing 50% glycerol, 0.5% BSA and 0.02% New type preservative N.
Purification	Affinity purification

Immunogen

Gene Name	USP50
Alternative Names	USP50; Inactive ubiquitin carboxyl-terminal hydrolase 50; Inactive ubiquitin-specific peptidase 50
Gene ID	373509.0
SwissProt ID	Q70EL3.The antiserum was produced against synthesized peptide derived from human USP50. AA range:251-300

Application

Dilution Ratio	WB 1:500 - 1:2000. IHC 1:100 - 1:300. ELISA: 1:20000..
Molecular Weight	38kD

Product Name: USP50 Rabbit Polyclonal Antibody
Catalog #: AP Rab19686

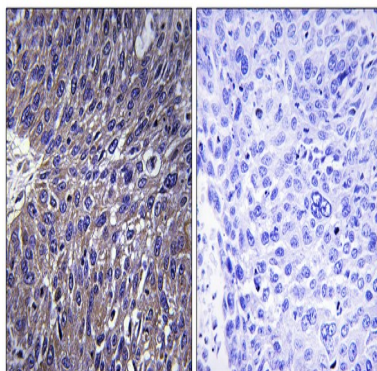


Background

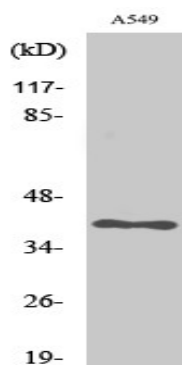
caution:Although the active site residues are conserved, lacks the conserved Asp/Asn residue which is normally found 7-9 residues after the catalytic His.,function:Has no peptidase activity.,similarity:Belongs to the peptidase C19 family.,tissue specificity:Weakly expressed in a few tissues.,caution:Although the active site residues are conserved, lacks the conserved Asp/Asn residue which is normally found 7-9 residues after the catalytic His.,function:Has no peptidase activity.,similarity:Belongs to the peptidase C19 family.,tissue specificity:Weakly expressed in a few tissues.,

Research Area

Image Data



Immunohistochemistry analysis of paraffin-embedded human lung carcinoma tissue, using USP50 Antibody. The picture on the right is blocked with the synthesized peptide.



Western Blot analysis of various cells using USP50 Polyclonal Antibody. Secondary antibody was diluted at 1:20000

Note

For research use only.