

## Summary

<b>Production Name</b>	USP42 Rabbit Polyclonal Antibody
<b>Description</b>	Rabbit Polyclonal Antibody
<b>Host</b>	Rabbit
<b>Application</b>	WB,ELISA
<b>Reactivity</b>	Human,Mouse,Rat

## Performance

<b>Conjugation</b>	Unconjugated
<b>Modification</b>	Unmodified
<b>Isotype</b>	IgG
<b>Clonality</b>	Polyclonal
<b>Form</b>	Liquid
<b>Storage</b>	Store at 4°C short term. Aliquot and store at -20°C long term. Avoid freeze/thaw cycles.
<b>Buffer</b>	Liquid in PBS containing 50% glycerol, 0.5% BSA and 0.02% New type preservative N.
<b>Purification</b>	Affinity purification

## Immunogen

<b>Gene Name</b>	USP42
<b>Alternative Names</b>	USP42; Ubiquitin carboxyl-terminal hydrolase 42; Deubiquitinating enzyme 42; Ubiquitin thioesterase 42; Ubiquitin-specific-processing protease 42
<b>Gene ID</b>	84132.0
<b>SwissProt ID</b>	Q9H9J4.The antiserum was produced against synthesized peptide derived from human USP42. AA range:251-300

## Application

<b>Dilution Ratio</b>	WB 1:500 - 1:2000. ELISA: 1:10000. Not yet tested in other applications.
<b>Molecular Weight</b>	150kD

**Product Name: USP42 Rabbit Polyclonal Antibody**  
**Catalog #: APRab19680**

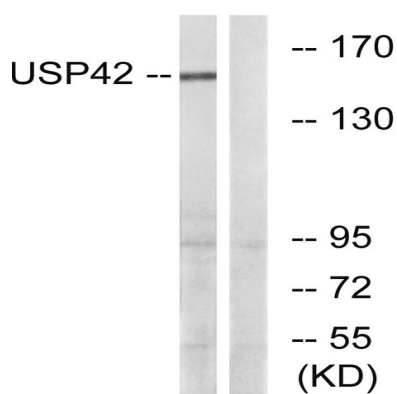


## Background

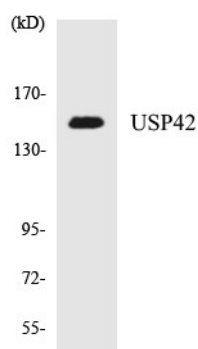
catalytic activity: Ubiquitin C-terminal thioester + H<sub>2</sub>O = ubiquitin + a thiol, similarity: Belongs to the peptidase C19 family, tissue specificity: Broadly expressed, catalytic activity: Ubiquitin C-terminal thioester + H<sub>2</sub>O = ubiquitin + a thiol, similarity: Belongs to the peptidase C19 family, tissue specificity: Broadly expressed,

## Research Area

## Image Data



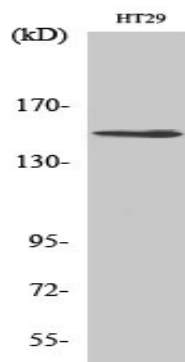
Western blot analysis of lysates from HT-29 cells, using USP42 Antibody. The lane on the right is blocked with the synthesized peptide.



Western blot analysis of the lysates from HeLa cells using USP42 antibody.

**Product Name: USP42 Rabbit Polyclonal Antibody**  
**Catalog #: APRab19680**

---



Western Blot analysis of various cells using USP42 Polyclonal Antibody. Secondary antibody was diluted at 1:20000

### **Note**

For research use only.