

Product Name: USP11 Rabbit Polyclonal Antibody
Catalog #: APRab19662



Summary

Production Name	USP11 Rabbit Polyclonal Antibody
Description	Rabbit Polyclonal Antibody
Host	Rabbit
Application	IF, WB, ELISA
Reactivity	Human, Mouse, Rat

Performance

Conjugation	Unconjugated
Modification	Unmodified
Isotype	IgG
Clonality	Polyclonal
Form	Liquid
Storage	Store at 4°C short term. Aliquot and store at -20°C long term. Avoid freeze/thaw cycles.
Buffer	Liquid in PBS containing 50% glycerol, 0.5% BSA and 0.02% New type preservative N.
Purification	Affinity purification

Immunogen

Gene Name	USP11
Alternative Names	USP11; UHX1; Ubiquitin carboxyl-terminal hydrolase 11; Deubiquitinating enzyme 11; Ubiquitin thioesterase 11; Ubiquitin-specific-processing protease 11
Gene ID	8237.0
SwissProt ID	P51784. Synthesized peptide derived from the Internal region of human USP11.

Application

Dilution Ratio	IF 1:50-200 WB 1:500 - 1:2000. ELISA: 1:20000. Not yet tested in other applications.
Molecular Weight	105kD

Background

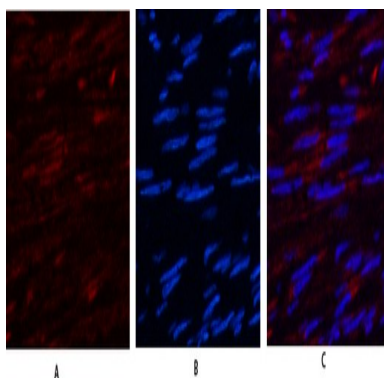
Product Name: USP11 Rabbit Polyclonal Antibody
Catalog #: AP Rab19662



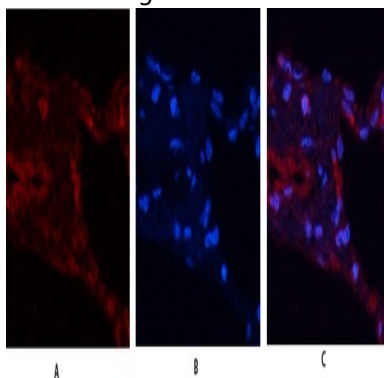
Protein ubiquitination controls many intracellular processes, including cell cycle progression, transcriptional activation, and signal transduction. This dynamic process, involving ubiquitin conjugating enzymes and deubiquitinating enzymes, adds and removes ubiquitin. Deubiquitinating enzymes are cysteine proteases that specifically cleave ubiquitin from ubiquitin-conjugated protein substrates. This gene encodes a deubiquitinating enzyme which lies in a gene cluster on chromosome Xp11.23 [provided by RefSeq, Jul 2008], catalytic activity: Ubiquitin C-terminal thioester + H₂O = ubiquitin + a thiol., similarity: Belongs to the peptidase C19 family., similarity: Contains 1 DUSP domain., subunit: Interacts with RANBP9/RANBPM.,

Research Area

Image Data

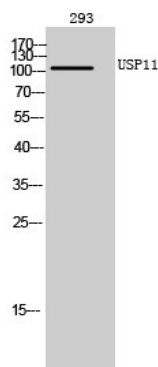


Immunofluorescence analysis of human-uterus tissue. 1, USP11 Polyclonal Antibody (red) was diluted at 1:200 (4°, overnight). 2, Cy3 labeled Secondary antibody was diluted at 1:300 (room temperature, 50min). 3, Picture B: DAPI (blue) 10min. Picture A: Target. Picture B: DAPI. Picture C: merge of A+B



Immunofluorescence analysis of human-lung tissue. 1, USP11 Polyclonal Antibody (red) was diluted at 1:200 (4°, overnight). 2, Cy3 labeled Secondary antibody was diluted at 1:300 (room temperature, 50min). 3, Picture B: DAPI (blue) 10min. Picture A: Target. Picture B: DAPI. Picture C: merge of A+B

Product Name: USP11 Rabbit Polyclonal Antibody
Catalog #: APRab19662



Western Blot analysis of 293 cells using USP11 Polyclonal Antibody. Secondary antibody was diluted at 1:20000 cells nucleus extracted by Minute TM Cytoplasmic and Nuclear Fractionation kit (SC-003, Invent biotech, MN, USA) .

Note

For research use only.