

Summary

Production Name	UEV3 Rabbit Polyclonal Antibody
Description	Rabbit Polyclonal Antibody
Host	Rabbit
Application	WB,IHC,ELISA
Reactivity	Human,Rat,Mouse

Performance

Conjugation	Unconjugated
Modification	Unmodified
Isotype	IgG
Clonality	Polyclonal
Form	Liquid
Storage	Store at 4°C short term. Aliquot and store at -20°C long term. Avoid freeze/thaw cycles.
Buffer	Liquid in PBS containing 50% glycerol, 0.5% BSA and 0.02% New type preservative N.
Purification	Affinity purification

Immunogen

Gene Name	UEVLD
Alternative Names	UEVLD; UEV3; Ubiquitin-conjugating enzyme E2 variant 3; UEV-3; EV and lactate/malate dehydrogenase domain-containing protein
Gene ID	55293.0
SwissProt ID	Q8IX04.The antiserum was produced against synthesized peptide derived from human UEVLD. AA range:141-190

Application

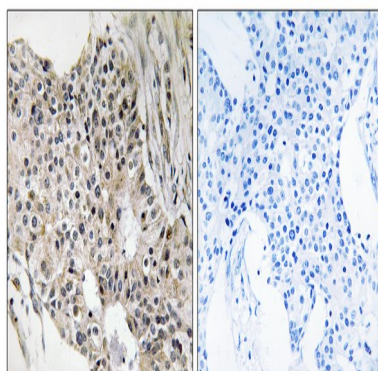
Dilution Ratio	WB 1:500 - 1:2000. IHC 1:100 - 1:300. ELISA: 1:40000..
Molecular Weight	52kD

Background

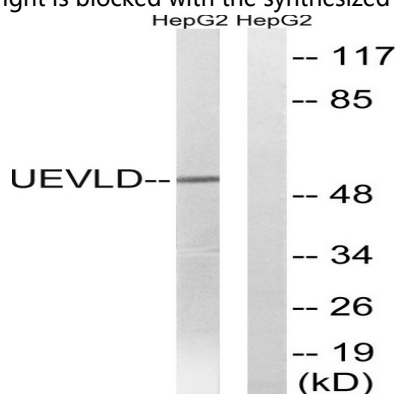
function: Possible negative regulator of polyubiquitination., similarity: Contains 1 UEV (ubiquitin E2 variant) domain., similarity: In the C-terminal section; belongs to the LDH/MDH superfamily., similarity: In the N-terminal section; belongs to the ubiquitin-conjugating enzyme family. UEV subfamily., subunit: Homodimer., tissue specificity: Colon, colon carcinoma cell lines, normal cervical epithelium, carcinomas of the uterine cervix and peripheral blood leukocytes., function: Possible negative regulator of polyubiquitination., similarity: Contains 1 UEV (ubiquitin E2 variant) domain., similarity: In the C-terminal section; belongs to the LDH/MDH superfamily., similarity: In the N-terminal section; belongs to the ubiquitin-conjugating enzyme family. UEV subfamily., subunit: Homodimer., tissue specificity: Colon, colon carcinoma cell lines, normal cervical epithelium, carcinomas of the uterine cervix and peripheral blood leukocytes.,

Research Area

Image Data



Immunohistochemistry analysis of paraffin-embedded human breast carcinoma tissue, using UEVLD Antibody. The picture on the right is blocked with the synthesized peptide.



Western blot analysis of lysates from HepG2 cells, using UEVLD Antibody. The lane on the right is blocked with the synthesized peptide.

Product Name: UEV3 Rabbit Polyclonal Antibody
Catalog #: APRab19606



Note

For research use only.