

Product Name: TSSK1 Rabbit Polyclonal Antibody
Catalog #: APRab19378



Summary

Production Name	TSSK1 Rabbit Polyclonal Antibody
Description	Rabbit Polyclonal Antibody
Host	Rabbit
Application	WB
Reactivity	Human,Mouse

Performance

Conjugation	Unconjugated
Modification	Unmodified
Isotype	IgG
Clonality	Polyclonal
Form	Liquid
Storage	Store at 4°C short term. Aliquot and store at -20°C long term. Avoid freeze/thaw cycles.
Buffer	Liquid in PBS containing 50% glycerol, and 0.02% New type preservative N.
Purification	Affinity purification

Immunogen

Gene Name	TSSK1B SPOGA1 SPOGA4 STK22A STK22D TSSK1 FKSG81
Alternative Names	
Gene ID	83942.0
SwissProt ID	Q9BXA7.Synthesized peptide derived from part region of human protein

Application

Dilution Ratio	WB 1:500-2000 ELISA 1:5000-20000
Molecular Weight	40kD

Background

TSSK1 belongs to a family of serine/threonine kinases highly expressed in testis (Hao et al., 2004 [PubMed 15044604]).
[supplied by OMIM, Mar 2008],catalytic activity:ATP + a protein = ADP + a phosphoprotein.,cofactor:Magnesium.,enzyme

Product Name: TSSK1 Rabbit Polyclonal Antibody
Catalog #: AP Rab19378

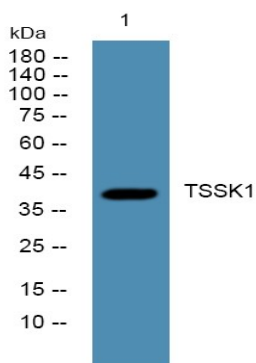


regulation: Activated by phosphorylation on Thr-174, potentially by autophosphorylation., function: May be involved in a signaling pathway during male germ cell development or mature sperm

function., PTM: Autophosphorylated., similarity: Belongs to the protein kinase superfamily., similarity: Belongs to the protein kinase superfamily. CAMK Ser/Thr protein kinase family., similarity: Contains 1 protein kinase domain.,

Research Area

Image Data



Western blot analysis of lysates from U2OS cells, primary antibody was diluted at 1:1000, 4° over night

Note

For research use only.