

**Product Name: TSSK 4 Rabbit Polyclonal Antibody**  
**Catalog #: APRab19376**



## Summary

<b>Production Name</b>	TSSK 4 Rabbit Polyclonal Antibody
<b>Description</b>	Rabbit Polyclonal Antibody
<b>Host</b>	Rabbit
<b>Application</b>	WB,ELISA
<b>Reactivity</b>	Human,Mouse

## Performance

<b>Conjugation</b>	Unconjugated
<b>Modification</b>	Unmodified
<b>Isotype</b>	IgG
<b>Clonality</b>	Polyclonal
<b>Form</b>	Liquid
<b>Storage</b>	Store at 4°C short term. Aliquot and store at -20°C long term. Avoid freeze/thaw cycles.
<b>Buffer</b>	Liquid in PBS containing 50% glycerol, 0.5% BSA and 0.02% New type preservative N.
<b>Purification</b>	Affinity purification

## Immunogen

<b>Gene Name</b>	TSSK4
<b>Alternative Names</b>	TSSK4; C14orf20; STK22E; TSSK5; Testis-specific serine/threonine-protein kinase 4; TSK-4; TSSK-4; Testis-specific kinase 4; Serine/threonine-protein kinase 22E
<b>Gene ID</b>	283629.0
<b>SwissProt ID</b>	Q6SA08.The antiserum was produced against synthesized peptide derived from human TSSK4. AA range:211-260

## Application

<b>Dilution Ratio</b>	WB 1:500 - 1:2000. ELISA: 1:10000. Not yet tested in other applications.
<b>Molecular Weight</b>	40kD

**Product Name: TSSK 4 Rabbit Polyclonal Antibody**  
**Catalog #: AP Rab19376**

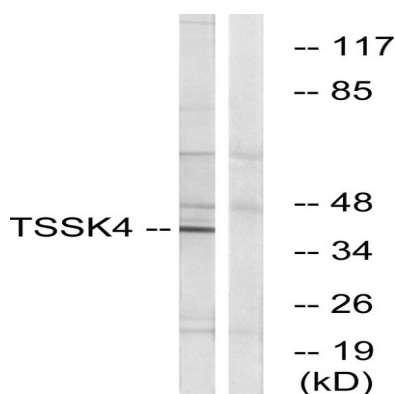


## Background

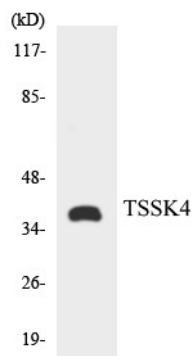
This gene encodes a member of the testis-specific serine/threonine kinase family. The encoded protein is thought to be involved in spermatogenesis via stimulation of the CREB/CRE responsive pathway through phosphorylation of the cAMP responsive element binding protein transcription factor. Alternative splicing results in multiple transcript variants.[provided by RefSeq, May 2010],catalytic activity:ATP + a protein = ADP + a phosphoprotein.,cofactor:Magnesium.,enzyme regulation:Activated by phosphorylation on Thr-197, potentially by autophosphorylation.,function:May be involved in a signaling pathway during male germ cell development or mature sperm function (By similarity). Phosphorylates CREB1 on Ser-133 and stimulates downstream signaling.,PTM:Autophosphorylated (By similarity). Phosphorylated upon DNA damage, probably by ATM or ATR.,similarity:Belongs to the protein kinase superfamily. CAMK Ser/Thr protein kinase family.,similarity:Contains 1 protein kinase domain.,tissue specificity:Expressed only in the testis.,

## Research Area

## Image Data



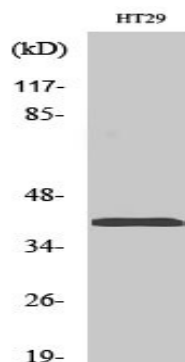
Western blot analysis of lysates from HT-29 cells, using TSSK4 Antibody. The lane on the right is blocked with the synthesized peptide.



Western blot analysis of the lysates from HT-29 cells using TSSK4 antibody.

**Product Name: TSSK 4 Rabbit Polyclonal Antibody**  
**Catalog #: APRab19376**

---



Western Blot analysis of various cells using TSSK 4 Polyclonal Antibody. Secondary antibody was diluted at 1:20000

### **Note**

For research use only.