

**Product Name: TSSC4 Rabbit Polyclonal Antibody**  
**Catalog #: APRab19375**



## Summary

<b>Production Name</b>	TSSC4 Rabbit Polyclonal Antibody
<b>Description</b>	Rabbit Polyclonal Antibody
<b>Host</b>	Rabbit
<b>Application</b>	WB
<b>Reactivity</b>	Human,Mouse,Rat

## Performance

<b>Conjugation</b>	Unconjugated
<b>Modification</b>	Unmodified
<b>Isotype</b>	IgG
<b>Clonality</b>	Polyclonal
<b>Form</b>	Liquid
<b>Storage</b>	Store at 4°C short term. Aliquot and store at -20°C long term. Avoid freeze/thaw cycles.
<b>Buffer</b>	Liquid in PBS containing 50% glycerol, and 0.02% New type preservative N.
<b>Purification</b>	Affinity purification

## Immunogen

<b>Gene Name</b>	TSSC4
<b>Alternative Names</b>	
<b>Gene ID</b>	10078.0
<b>SwissProt ID</b>	Q9Y5U2.Synthesized peptide derived from part region of human protein

## Application

<b>Dilution Ratio</b>	WB 1:500-2000 ELISA 1:5000-20000
<b>Molecular Weight</b>	36kD

## Background

This gene is one of several tumor-suppressing subtransferable fragments located in the imprinted gene domain of 11p15.5, an important tumor-suppressor gene region. Alterations in this region have been associated with the Beckwith-Wiedemann

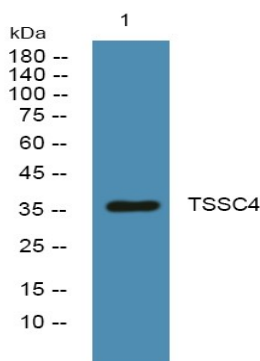
**Product Name: TSSC4 Rabbit Polyclonal Antibody**  
**Catalog #: AP Rab19375**



syndrome, Wilms tumor, rhabdomyosarcoma, adrenocortical carcinoma, and lung, ovarian, and breast cancer. This gene is located among several imprinted genes; however, this gene, as well as the pan-hematopoietic expression gene (PHEMX), escapes imprinting. This gene may play a role in malignancies and disease that involve this region. Several transcript variants encoding two different isoforms have been found for this gene. [provided by RefSeq, Jul 2014], similarity: Belongs to the TSSC4 family., tissue specificity: Expressed in fetal brain, lung, liver and kidney. Widely expressed in adult tissues.,

## Research Area

## Image Data



Western blot analysis of lysates from PC12 cells, primary antibody was diluted at 1:1000, 4° over night

## Note

For research use only.