

**Product Name: TS1R2 Rabbit Polyclonal Antibody**  
**Catalog #: APRab19351**



## Summary

<b>Production Name</b>	TS1R2 Rabbit Polyclonal Antibody
<b>Description</b>	Rabbit Polyclonal Antibody
<b>Host</b>	Rabbit
<b>Application</b>	WB
<b>Reactivity</b>	Human,Rat,Mouse

## Performance

<b>Conjugation</b>	Unconjugated
<b>Modification</b>	Unmodified
<b>Isotype</b>	IgG
<b>Clonality</b>	Polyclonal
<b>Form</b>	Liquid
<b>Storage</b>	Store at 4°C short term. Aliquot and store at -20°C long term. Avoid freeze/thaw cycles.
<b>Buffer</b>	Liquid in PBS containing 50% glycerol, and 0.02% New type preservative N.
<b>Purification</b>	Affinity purification

## Immunogen

<b>Gene Name</b>	TAS1R2 GPR71 T1R2 TR2
<b>Alternative Names</b>	
<b>Gene ID</b>	80834.0
<b>SwissProt ID</b>	Q8TE23.Synthesized peptide derived from human protein . at AA range: 190-270

## Application

<b>Dilution Ratio</b>	WB 1:500-2000 ELISA 1:5000-20000
<b>Molecular Weight</b>	92kD

## Background

function:Putative taste receptor. TAS1R2/TAS1R3 recognizes diverse natural and synthetic sweeteners.,online  
information:The taste experience -Issue 55 of February 2005,similarity:Belongs to the G-protein coupled receptor 3 family.

**Product Name: TS1R2 Rabbit Polyclonal Antibody**  
**Catalog #: APRab19351**

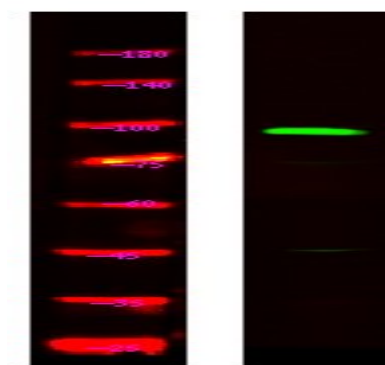


TAS1R subfamily.,subunit:Forms heterodimers with TAS1R3.,function:Putative taste receptor. TAS1R2/TAS1R3 recognizes diverse natural and synthetic sweeteners.,online information:The taste experience -Issue 55 of February 2005,similarity:Belongs to the G-protein coupled receptor 3 family. TAS1R subfamily.,subunit:Forms heterodimers with TAS1R3.,

## Research Area

Taste transduction;

## Image Data



Western Blot analysis of Hela lysis, using primary antibody at 1:1000 dilution. Secondary antibody was diluted at 1:10000

## Note

For research use only.