

**Product Name: TRIM59 Rabbit Polyclonal Antibody**  
**Catalog #: APRab19275**



## Summary

<b>Production Name</b>	TRIM59 Rabbit Polyclonal Antibody
<b>Description</b>	Rabbit Polyclonal Antibody
<b>Host</b>	Rabbit
<b>Application</b>	IF,IHC,WB,
<b>Reactivity</b>	Human,Mouse

## Performance

<b>Conjugation</b>	Unconjugated
<b>Modification</b>	Unmodified
<b>Isotype</b>	IgG
<b>Clonality</b>	Polyclonal
<b>Form</b>	Liquid
<b>Storage</b>	Store at 4°C short term. Aliquot and store at -20°C long term. Avoid freeze/thaw cycles.
<b>Buffer</b>	Liquid in PBS containing 50% glycerol, 0.5% BSA and 0.02% New type preservative N.
<b>Purification</b>	Affinity purification

## Immunogen

<b>Gene Name</b>	TRIM59
<b>Alternative Names</b>	TRIM59; RNF104; TRIM57; TSBF1; Tripartite motif-containing protein 59; RING finger protein 104; Tumor suppressor TSBF-1
<b>Gene ID</b>	286827.0
<b>SwissProt ID</b>	Q8IWR1.The antiserum was produced against synthesized peptide derived from human TRIM59. AA range:191-240

## Application

<b>Dilution Ratio</b>	WB 1:500 - 1:2000 IHC 1:100 - 1:300. IF 1:200 - 1:1000. ELISA: 1:40000. Not yet tested in other applications.
<b>Molecular Weight</b>	47kD

**Product Name: TRIM59 Rabbit Polyclonal Antibody**  
**Catalog #: APRab19275**

---

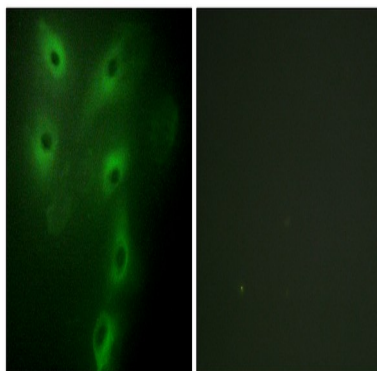


## Background

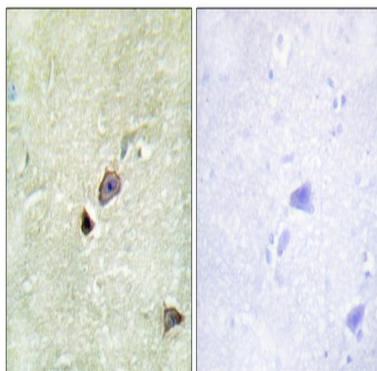
similarity:Belongs to the TRIM/RBCC family.,similarity:Contains 1 B box-type zinc finger.,similarity:Contains 1 RING-type zinc finger.,similarity:Belongs to the TRIM/RBCC family.,similarity:Contains 1 B box-type zinc finger.,similarity:Contains 1 RING-type zinc finger.,

## Research Area

## Image Data

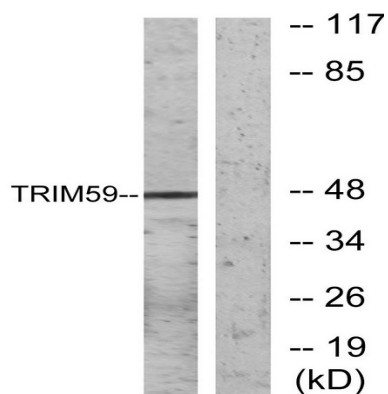


Immunofluorescence analysis of HeLa cells, using TRIM59 Antibody. The picture on the right is blocked with the synthesized peptide.

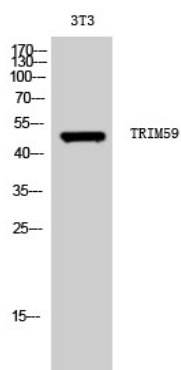


Immunohistochemistry analysis of paraffin-embedded human brain tissue, using TRIM59 Antibody. The picture on the right is blocked with the synthesized peptide.

**Product Name: TRIM59 Rabbit Polyclonal Antibody**  
**Catalog #: APRab19275**



Western blot analysis of lysates from NIH/3T3 cells, using TRIM59 Antibody. The lane on the right is blocked with the synthesized peptide.



Western Blot analysis of 3T3 cells using TRIM59 Polyclonal Antibody. Secondary antibody was diluted at 1:20000

## Note

For research use only.