

Summary

Production Name	TREM-1 Rabbit Polyclonal Antibody
Description	Rabbit Polyclonal Antibody
Host	Rabbit
Application	WB,IHC,ELISA
Reactivity	Human,Rat,Mouse

Performance

Conjugation	Unconjugated
Modification	Unmodified
Isotype	IgG
Clonality	Polyclonal
Form	Liquid
Storage	Store at 4°C short term. Aliquot and store at -20°C long term. Avoid freeze/thaw cycles.
Buffer	Liquid in PBS containing 50% glycerol, 0.5% BSA and 0.02% New type preservative N.
Purification	Affinity purification

Immunogen

Gene Name	TREM1
Alternative Names	TREM1; Triggering receptor expressed on myeloid cells 1; TREM-1; Triggering receptor expressed on monocytes 1; CD354
Gene ID	54210.0
SwissProt ID	Q9NP99.Synthesized peptide derived from TREM-1 . at AA range: 40-120

Application

Dilution Ratio	WB 1:500-2000;IHC-p 1:100-500;ELISA 1:5000-20000
Molecular Weight	26kD

Background

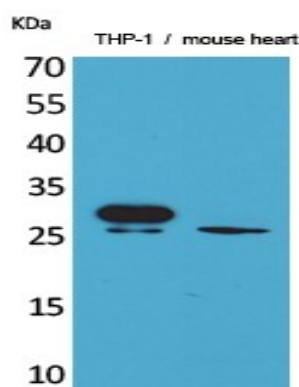
Product Name: TREM-1 Rabbit Polyclonal Antibody
Catalog #: AP Rab19234



triggering receptor expressed on myeloid cells 1 (TREM1) Homo sapiens This gene encodes a receptor belonging to the Ig superfamily that is expressed on myeloid cells. This protein amplifies neutrophil and monocyte-mediated inflammatory responses triggered by bacterial and fungal infections by stimulating release of pro-inflammatory chemokines and cytokines, as well as increased surface expression of cell activation markers. Alternatively spliced transcript variants encoding different isoforms have been noted for this gene.[provided by RefSeq, Jun 2011],function:Stimulates neutrophil and monocyte-mediated inflammatory responses. Triggers release of pro-inflammatory chemokines and cytokines, as well as increased surface expression of cell activation markers. Amplifier of inflammatory responses that are triggered by bacterial and fungal infections and is a crucial mediator of septic shock.,induction:Up-regulated by bacteria, fungi and lipopolysaccharides (LPS),PTM:Glycosylated.,similarity:Contains 1 Ig-like V-type (immunoglobulin-like) domain.,subunit:Interacts with TYROBP/DAP12.,tissue specificity:Highly expressed in adult liver, lung and spleen than in corresponding fetal tissue. Also expressed in the lymph node, placenta, spinal cord and heart tissues. Expression is more elevated in peripheral blood leukocytes than in the bone marrow and in normal cells than malignant cells. Expressed at low levels in the early development of the hematopoietic system and in the promonocytic stage and at high levels in mature monocytes. Strongly expressed in acute inflammatory lesions caused by bacteria and fungi. Isoform 2 was detected in the lung, liver and mature monocytes.,

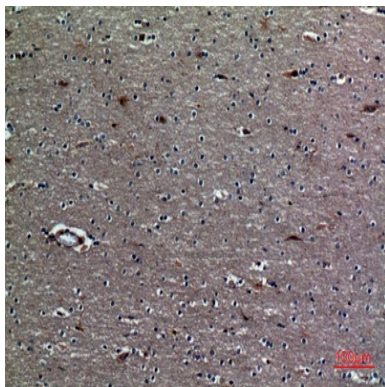
Research Area

Image Data



Western Blot analysis of THP-1, mouse heart cells using TREM-1 Polyclonal Antibody.. Secondary antibody was diluted at 1:20000

Product Name: TREM-1 Rabbit Polyclonal Antibody
Catalog #: APRab19234



Immunohistochemical analysis of paraffin-embedded human-brain, antibody was diluted at 1:100

Note

For research use only.