

**Product Name: Tra-2 $\alpha$  Rabbit Polyclonal Antibody**  
**Catalog #: APRab19175**



## Summary

<b>Production Name</b>	Tra-2 $\alpha$ Rabbit Polyclonal Antibody
<b>Description</b>	Rabbit Polyclonal Antibody
<b>Host</b>	Rabbit
<b>Application</b>	IF,IHC,WB,
<b>Reactivity</b>	Human,Mouse

## Performance

<b>Conjugation</b>	Unconjugated
<b>Modification</b>	Unmodified
<b>Isotype</b>	IgG
<b>Clonality</b>	Polyclonal
<b>Form</b>	Liquid
<b>Storage</b>	Store at 4°C short term. Aliquot and store at -20°C long term. Avoid freeze/thaw cycles.
<b>Buffer</b>	Liquid in PBS containing 50% glycerol, 0.5% BSA and 0.02% New type preservative N.
<b>Purification</b>	Affinity purification

## Immunogen

<b>Gene Name</b>	TRA2A
<b>Alternative Names</b>	TRA2A; Transformer-2 protein homolog alpha; TRA-2 alpha; TRA2-alpha; Transformer-2 protein homolog A
<b>Gene ID</b>	29896.0
<b>SwissProt ID</b>	Q13595.The antiserum was produced against synthesized peptide derived from human TRA-2 alpha. AA range:221-270

## Application

<b>Dilution Ratio</b>	WB 1:500 - 1:2000 IHC 1:100 - 1:300. IF 1:200 - 1:1000. ELISA: 1:20000. Not yet tested in other applications.
<b>Molecular Weight</b>	33kD

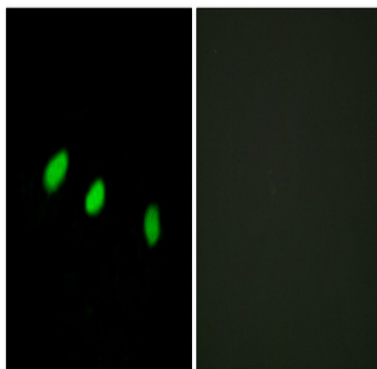
## Background

This gene is a member of the transformer 2 homolog family and encodes a protein with several RRM (RNA recognition motif) domains. This phosphorylated nuclear protein binds to specific RNA sequences and plays a role in the regulation of pre-mRNA splicing. Alternatively spliced transcript variants have been found for this gene. [provided by RefSeq, Sep 2013],function:Sequence-specific RNA-binding protein which participates in the control of pre-mRNA splicing.,PTM:Phosphorylated in the RS domains.,similarity:Belongs to the splicing factor SR family.,similarity:Contains 1 RRM (RNA recognition motif) domain.,subunit:Binds to A3 enhancer proteins SRp75, SRp55, SRp40 and SRp30.,

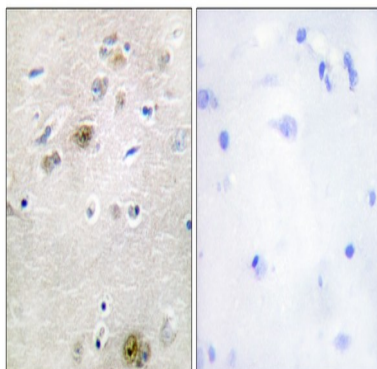
## Research Area

Spliceosome;

## Image Data

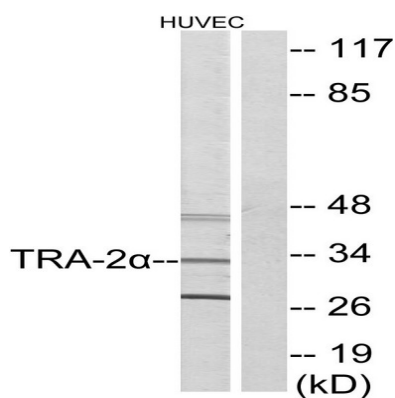


Immunofluorescence analysis of HeLa cells, using TRA-2 alpha Antibody. The picture on the right is blocked with the synthesized peptide.

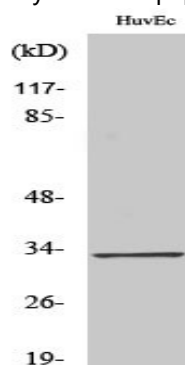


Immunohistochemistry analysis of paraffin-embedded human brain tissue, using TRA-2 alpha Antibody. The picture on the right is blocked with the synthesized peptide.

**Product Name: Tra-2 $\alpha$  Rabbit Polyclonal Antibody**  
**Catalog #: APRab19175**



Western blot analysis of lysates from HUVEC cells, using TRA-2 alpha Antibody. The lane on the right is blocked with the synthesized peptide.



Western Blot analysis of various cells using Tra-2 $\alpha$  Polyclonal Antibody diluted at 1: 500. Secondary antibody was diluted at 1:20000 cells nucleus extracted by Minute TM Cytoplasmic and Nuclear Fractionation kit (SC-003, Inventbiotech, MN, USA) .

## Note

For research use only.