

Summary

Production Name	TPX2 Rabbit Polyclonal Antibody
Description	Rabbit Polyclonal Antibody
Host	Rabbit
Application	IHC, WB,
Reactivity	Human, Mouse

Performance

Conjugation	Unconjugated
Modification	Unmodified
Isotype	IgG
Clonality	Polyclonal
Form	Liquid
Storage	Store at 4°C short term. Aliquot and store at -20°C long term. Avoid freeze/thaw cycles.
Buffer	Liquid in PBS containing 50% glycerol, 0.5% BSA and 0.02% New type preservative N.
Purification	Affinity purification

Immunogen

Gene Name	TPX2
Alternative Names	TPX2; C20orf1; C20orf2; DIL2; HCA519; Targeting protein for Xklp2; Differentially expressed in cancerous and non-cancerous lung cells 2; DIL-2; Hepatocellular carcinoma-associated antigen 519; Protein fls353; Restricted expression proliferin
Gene ID	22974.0
SwissProt ID	Q9ULW0. The antiserum was produced against synthesized peptide derived from human DIL-2. AA range: 301-350

Application

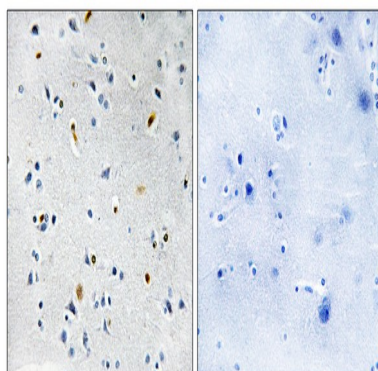
Dilution Ratio	WB 1:500 - 1:2000. IHC 1:100 - 1:300. ELISA: 1:10000..
Molecular Weight	86kD

Background

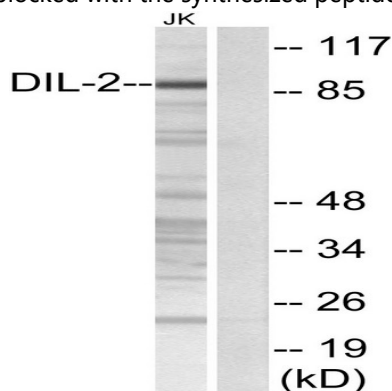
developmental stage: Exclusively expressed in proliferating cells from the transition G1/S until the end of cytokinesis., PTM: Phosphorylated upon DNA damage, probably by ATM or ATR., subcellular location: During mitosis it is strictly associated with the spindle pole and with the mitotic spindle, whereas during S and G2, it is diffusely distributed throughout the nucleus., tissue specificity: Expressed in lung carcinoma cell lines but not in normal lung tissues., developmental stage: Exclusively expressed in proliferating cells from the transition G1/S until the end of cytokinesis., PTM: Phosphorylated upon DNA damage, probably by ATM or ATR., subcellular location: During mitosis it is strictly associated with the spindle pole and with the mitotic spindle, whereas during S and G2, it is diffusely distributed throughout the nucleus., tissue specificity: Expressed in lung carcinoma cell lines but not in normal lung tissues.,

Research Area

Image Data

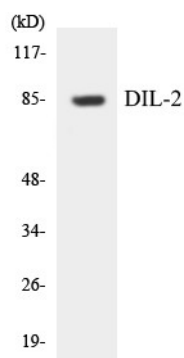


Immunohistochemistry analysis of paraffin-embedded human brain tissue, using DIL-2 Antibody. The picture on the right is blocked with the synthesized peptide.

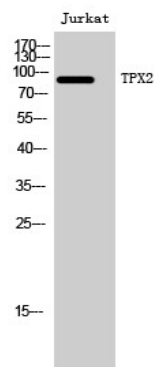


Western blot analysis of lysates from Jurkat cells, using DIL-2 Antibody. The lane on the right is blocked with the synthesized peptide.

Product Name: TPX2 Rabbit Polyclonal Antibody
Catalog #: APRab19171



Western blot analysis of the lysates from HUVEC cells using DIL-2 antibody.



Western Blot analysis of Jurkat cells using TPX2 Polyclonal Antibody. Secondary antibody was diluted at 1:20000 cells nucleus extracted by Minute TM Cytoplasmic and Nuclear Fractionation kit (SC-003, Invent biotech, MN, USA) .

Note

For research use only.