

Summary

Production Name	TPH1 Rabbit Polyclonal Antibody
Description	Rabbit Polyclonal Antibody
Host	Rabbit
Application	IF,IHC,WB,
Reactivity	Human,Mouse,Rat

Performance

Conjugation	Unconjugated
Modification	Unmodified
Isotype	IgG
Clonality	Polyclonal
Form	Liquid
Storage	Store at 4°C short term. Aliquot and store at -20°C long term. Avoid freeze/thaw cycles.
Buffer	Liquid in PBS containing 50% glycerol, 0.5% BSA and 0.02% New type preservative N.
Purification	Affinity purification

Immunogen

Gene Name	TPH1
Alternative Names	TPH1; TPH; TPRH; TRPH; Tryptophan 5-hydroxylase 1; Tryptophan 5-monooxygenase 1
Gene ID	7166.0
SwissProt ID	P17752.The antiserum was produced against synthesized peptide derived from human Tryptophan Hydroxylase. AA range:231-280

Application

Dilution Ratio	WB 1:500 - 1:2000 IHC 1:100 - 1:300. IF 1:200 - 1:1000. ELISA: 1:20000. Not yet tested in other applications.
Molecular Weight	51kD

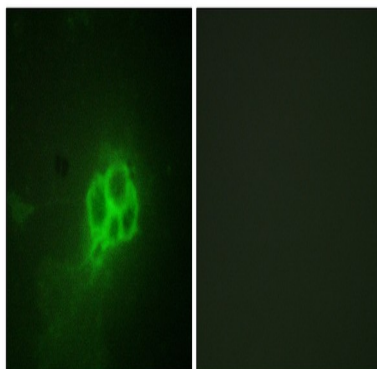
Background

This gene encodes a member of the aromatic amino acid hydroxylase family. The encoded protein catalyzes the first and rate limiting step in the biosynthesis of serotonin, an important hormone and neurotransmitter. Mutations in this gene have been associated with an elevated risk for a variety of diseases and disorders, including schizophrenia, somatic anxiety, anger-related traits, bipolar disorder, suicidal behavior, addictions, and others.[provided by RefSeq, Apr 2009],catalytic activity:L-tryptophan + tetrahydrobiopterin + O(2) = 5-hydroxy-L-tryptophan + 4a-hydroxytetrahydrobiopterin.,cofactor:Fe(2+) ion.,pathway:Aromatic compound metabolism; serotonin biosynthesis; serotonin from L-tryptophan: step 1/2.,similarity:Belongs to the biopterin-dependent aromatic amino acid hydroxylase family.,similarity:Contains 1 ACT domain.,subunit:Multimer of identical subunits.,tissue specificity:Isoform 2 seems to be less widely expressed than isoform 1.,

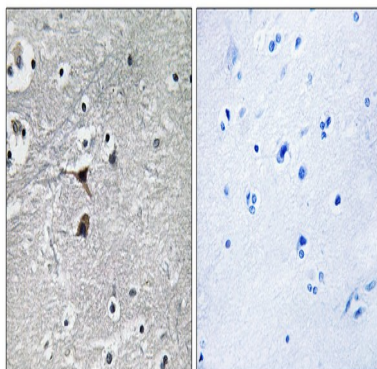
Research Area

Tryptophan metabolism;

Image Data

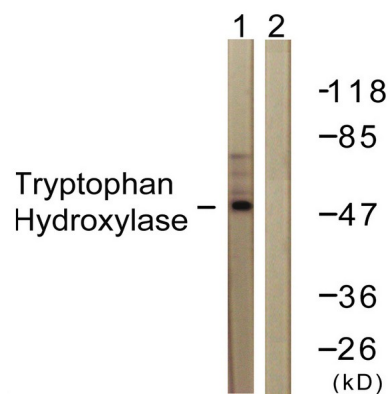


Immunofluorescence analysis of HUVEC cells, using Tryptophan Hydroxylase Antibody. The picture on the right is blocked with the synthesized peptide.

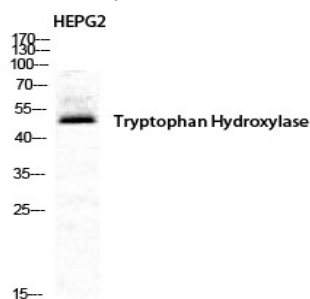


Immunohistochemistry analysis of paraffin-embedded human brain tissue, using Tryptophan Hydroxylase Antibody. The picture on the right is blocked with the synthesized peptide.

Product Name: TPH1 Rabbit Polyclonal Antibody
Catalog #: APRab19153



Western blot analysis of lysates from Jurkat cells, using Tryptophan Hydroxylase Antibody. The lane on the right is blocked with the synthesized peptide.



Western Blot analysis of HepG2 cells using TPH1 Polyclonal Antibody diluted at 1: 500. Secondary antibody was diluted at 1:20000

Note

For research use only.