

Summary

Production Name	TP53INP2 Rabbit Polyclonal Antibody
Description	Rabbit Polyclonal Antibody
Host	Rabbit
Application	IHC,IF,ELISA
Reactivity	Human,Mouse,Rat

Performance

Conjugation	Unconjugated
Modification	Unmodified
Isotype	IgG
Clonality	Polyclonal
Form	Liquid
Storage	Store at 4°C short term. Aliquot and store at -20°C long term. Avoid freeze/thaw cycles.
Buffer	Liquid in PBS containing 50% glycerol, 0.5% BSA and 0.02% New type preservative N.
Purification	Affinity purification

Immunogen

Gene Name	TP53INP2
Alternative Names	TP53INP2; C20orf110; DOR; PINH; Tumor protein p53-inducible nuclear protein 2; Diabetes and obesity-regulated gene; p53-inducible protein U; PIG-U
Gene ID	58476.0
SwissProt ID	Q8IXH6.The antiserum was produced against synthesized peptide derived from human TP53INP2. AA range:1-50

Application

Dilution Ratio	IHC 1:100 - 1:300. IF 1:200 - 1:1000. ELISA: 1:10000. Not yet tested in other applications.
Molecular Weight	17kD

Product Name: TP53INP2 Rabbit Polyclonal Antibody
Catalog #: APRab19143

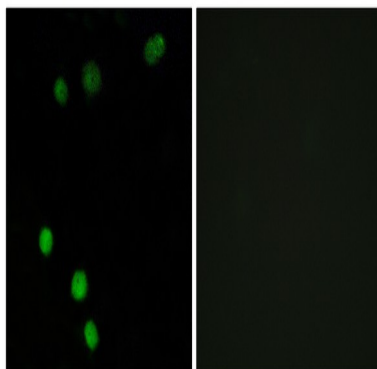


Background

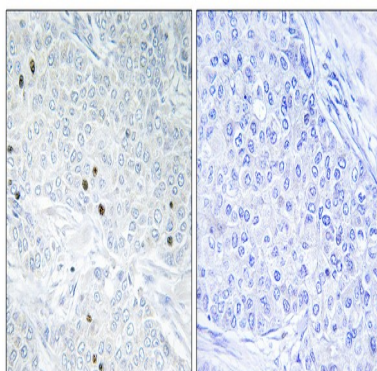
tumor protein p53 inducible nuclear protein 2 (TP53INP2) Homo sapiens The protein encoded by this gene promotes autophagy and is essential for proper autophagosome formation and processing. In addition, the encoded protein can enhance rDNA transcription by helping in the assembly of the POLR1/RNA polymerase I preinitiation complex. Finally, this protein serves as a transcriptional activator for some genes. [provided by RefSeq, Jul 2016],

Research Area

Image Data



Immunofluorescence analysis of MCF7 cells, using TP53INP2 Antibody. The picture on the right is blocked with the synthesized peptide.



Immunohistochemistry analysis of paraffin-embedded human breast carcinoma tissue, using TP53INP2 Antibody. The picture on the right is blocked with the synthesized peptide.

Note

For research use only.