

## Summary

<b>Production Name</b>	Tom20 Rabbit Polyclonal Antibody
<b>Description</b>	Rabbit Polyclonal Antibody
<b>Host</b>	Rabbit
<b>Application</b>	WB,ELISA
<b>Reactivity</b>	Human,Mouse,Rat

## Performance

<b>Conjugation</b>	Unconjugated
<b>Modification</b>	Unmodified
<b>Isotype</b>	IgG
<b>Clonality</b>	Polyclonal
<b>Form</b>	Liquid
<b>Storage</b>	Store at 4°C short term. Aliquot and store at -20°C long term. Avoid freeze/thaw cycles.
<b>Buffer</b>	Liquid in PBS containing 50% glycerol, 0.5% BSA and 0.02% New type preservative N.
<b>Purification</b>	Affinity purification

## Immunogen

<b>Gene Name</b>	TOMM20 TOMM20; KIAA0016; Mitochondrial import receptor subunit TOM20 homolog;
<b>Alternative Names</b>	Mitochondrial 20 kDa outer membrane protein; Outer mitochondrial membrane receptor Tom20
<b>Gene ID</b>	9804.0
<b>SwissProt ID</b>	Q15388.The antiserum was produced against synthesized peptide derived from human TOMM20. AA range:15-64

## Application

<b>Dilution Ratio</b>	WB 1:500-2000 ELISA 1:5000-20000
<b>Molecular Weight</b>	17kD

## Background

**function:**Central component of the receptor complex responsible for the recognition and translocation of cytosolically synthesized mitochondrial preproteins. Together with tom22 functions as the transit peptide receptor at the surface of the mitochondrion outer membrane and facilitates the movement of preproteins into the tom40 translocation

**pore.,similarity:**Belongs to the Tom20 family.,**subunit:**Forms part of the preprotein translocase complex of the outer mitochondrial membrane (TOM complex) which consists of at least 7 different proteins (TOMM5, TOMM6, TOMM7,

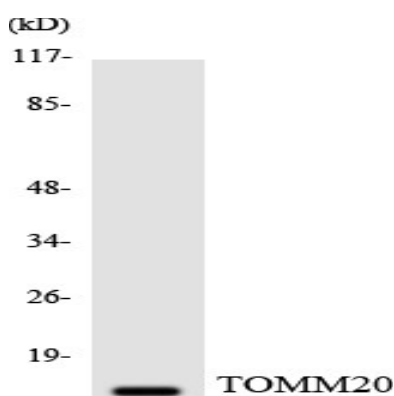
TOMM20, TOMM22, TOMM40 and TOMM70). Interacts with TOM22.,**function:**Central component of the receptor complex responsible for the recognition and translocation of cytosolically synthesized mitochondrial preproteins. Together with

tom22 functions as the transit peptide receptor at the surface of the mitochondrion outer membrane and facilitates the

movement of preproteins into the tom40 translocation pore.,**similarity:**Belongs to the Tom20 family.,**subunit:**Forms part of the preprotein translocase complex of the outer mitochondrial membrane (TOM complex) which consists of at least 7 different proteins (TOMM5, TOMM6, TOMM7, TOMM20, TOMM22, TOMM40 and TOMM70). Interacts with TOM22.,

## Research Area

## Image Data



Western blot analysis of the lysates from HeLa cells using TOMM20 antibody.



**Product Name: Tom20 Rabbit Polyclonal Antibody**  
**Catalog #: APRab19120**

---



Western Blot analysis of various cells using Tom20 Polyclonal Antibody diluted at 1: 500. Secondary antibody was diluted at 1:20000

**Note**

For research use only.