
Summary

| | |
|------------------------|------------------------------------|
| Production Name | TMEM101 Rabbit Polyclonal Antibody |
| Description | Rabbit Polyclonal Antibody |
| Host | Rabbit |
| Application | WB,ELISA |
| Reactivity | Human,Mouse |

Performance

| | |
|---------------------|--|
| Conjugation | Unconjugated |
| Modification | Unmodified |
| Isotype | IgG |
| Clonality | Polyclonal |
| Form | Liquid |
| Storage | Store at 4°C short term. Aliquot and store at -20°C long term. Avoid freeze/thaw cycles. |
| Buffer | Liquid in PBS containing 50% glycerol, 0.5% BSA and 0.02% New type preservative N. |
| Purification | Affinity purification |

Immunogen

| | |
|--------------------------|--|
| Gene Name | TMEM101 |
| Alternative Names | TMEM101; Transmembrane protein 101; Putative NF-kappa-B-activating protein 130 |
| Gene ID | 84336.0 |
| SwissProt ID | Q96IK0.The antiserum was produced against synthesized peptide derived from human TMEM101. AA range:101-150 |

Application

| | |
|-------------------------|-----------------------------------|
| Dilution Ratio | WB 1:500 - 1:2000. ELISA: 1:10000 |
| Molecular Weight | 28kD |

Background

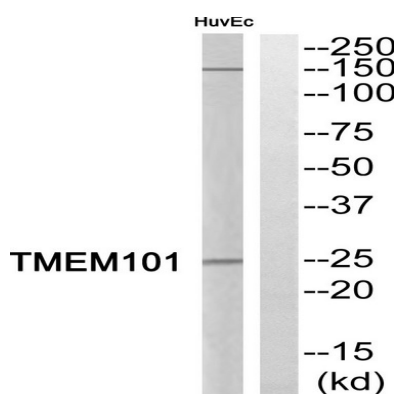
Product Name: TMEM101 Rabbit Polyclonal Antibody
Catalog #: APRab19045



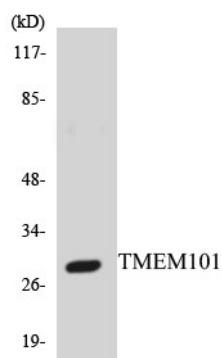
function:May activate NF-kappa-B signaling pathways.,function:May activate NF-kappa-B signaling pathways.,

Research Area

Image Data



Western blot analysis of TMEM101 Antibody. The lane on the right is blocked with the TMEM101 peptide.



Western blot analysis of the lysates from HepG2 cells using TMEM101 antibody.

Note

For research use only.