

Product Name: TM2D1 Rabbit Polyclonal Antibody
Catalog #: APRab19025



Summary

Production Name	TM2D1 Rabbit Polyclonal Antibody
Description	Rabbit Polyclonal Antibody
Host	Rabbit
Application	WB
Reactivity	Human,Mouse

Performance

Conjugation	Unconjugated
Modification	Unmodified
Isotype	IgG
Clonality	Polyclonal
Form	Liquid
Storage	Store at 4°C short term. Aliquot and store at -20°C long term. Avoid freeze/thaw cycles.
Buffer	Liquid in PBS containing 50% glycerol, and 0.02% New type preservative N.
Purification	Affinity purification

Immunogen

Gene Name	TM2D1 BBP
Alternative Names	
Gene ID	83941.0
SwissProt ID	Q9BX74.Synthesized peptide derived from part region of human protein

Application

Dilution Ratio	WB 1:500-2000 ELISA 1:5000-20000
Molecular Weight	22kD

Background

The protein encoded by this gene is a beta-amyloid peptide-binding protein. It contains a structural module related to that of the seven transmembrane domain G protein-coupled receptor superfamily and known to be important in heterotrimeric

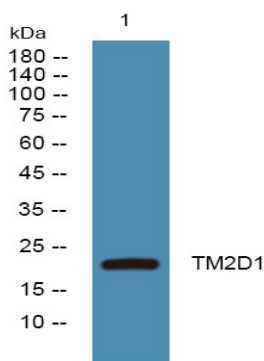
Product Name: TM2D1 Rabbit Polyclonal Antibody
Catalog #: APRab19025



G protein activation. Beta-amyloid peptide has been established to be a causative factor in neuron death and the consequent diminution of cognitive abilities observed in Alzheimer's disease. This protein may be a target of neurotoxic beta-amyloid peptide, and may mediate cellular vulnerability to beta-amyloid peptide toxicity through a G protein-regulated program of cell death. Several transcript variants have been found for this gene. [provided by RefSeq, Feb 2016], caution: Was initially thought (PubMed:11278849) to modulate beta-amyloid toxicity by coupling to G protein. However, PubMed:12836168 showed that this effect is not direct, function: May participate to beta-amyloid-induced apoptosis via its interaction with beta-APP42, PTM: N-glycosylated, similarity: Belongs to the TM2 family, subunit: Interacts with beta-APP42 (beta-amyloid protein 42) peptide of APP, tissue specificity: Widely expressed,

Research Area

Image Data



Western blot analysis of lysates from SW480 cells, primary antibody was diluted at 1:1000, 4°over night

Note

For research use only.