

Product Name: TLK2 Rabbit Polyclonal Antibody
Catalog #: APRab18983



Summary

Production Name	TLK2 Rabbit Polyclonal Antibody
Description	Rabbit Polyclonal Antibody
Host	Rabbit
Application	WB,ELISA
Reactivity	Human,Mouse

Performance

Conjugation	Unconjugated
Modification	Unmodified
Isotype	IgG
Clonality	Polyclonal
Form	Liquid
Storage	Store at 4°C short term. Aliquot and store at -20°C long term. Avoid freeze/thaw cycles.
Buffer	Liquid in PBS containing 50% glycerol, 0.5% BSA and 0.02% New type preservative N.
Purification	Affinity purification

Immunogen

Gene Name	TLK2
Alternative Names	TLK2; Serine/threonine-protein kinase tousled-like 2; HsHPK; PKU-alpha; Tousled-like kinase 2
Gene ID	11011.0
SwissProt ID	Q86UE8.The antiserum was produced against synthesized peptide derived from human TLK2. AA range:191-240

Application

Dilution Ratio	WB 1:500-2000 ELISA 2000-20000
Molecular Weight	90kD

Product Name: TLK2 Rabbit Polyclonal Antibody
Catalog #: AP Rab18983

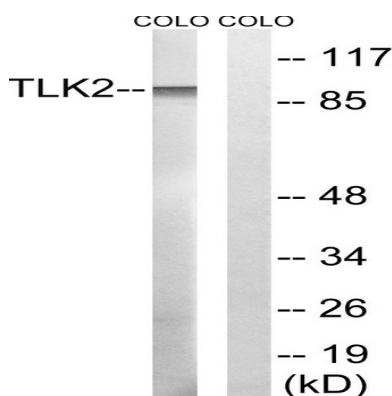


Background

This gene encodes a nuclear serine/threonine kinase that was first identified in Arabidopsis. The encoded protein is thought to function in the regulation of chromatin assembly in the S phase of the cell cycle by regulating the levels of a histone H3/H4 chaperone. This protein is associated with double-strand break repair of DNA damage caused by radiation. Pseudogenes of this gene are present on chromosomes 10 and 17. Alternate splicing results in multiple transcript variants. [provided by RefSeq, Sep 2013], catalytic activity: ATP + a protein = ADP + a phosphoprotein., cofactor: Magnesium., enzyme regulation: Cell-cycle regulated, maximal activity in S-phase. Inactivated by phosphorylation at Ser-750, potentially by CHK1., function: Rapidly and transiently inhibited by phosphorylation following the generation of DNA double-stranded breaks during S-phase. This is cell cycle checkpoint and ATM-pathway dependent and appears to regulate processes involved in chromatin assembly., similarity: Belongs to the protein kinase superfamily. Ser/Thr protein kinase family., similarity: Contains 1 protein kinase domain., subunit: Heterodimerizes with TLK1. Interacts with ASF1A and ASF1B., tissue specificity: Widely expressed. Present in fetal placenta, liver, kidney, pancreas, heart and skeletal muscle. Also found in adult cell lines.,

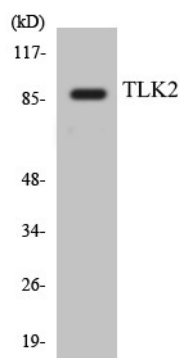
Research Area

Image Data



Western blot analysis of lysates from COLO cells, using TLK2 Antibody. The lane on the right is blocked with the synthesized peptide.

Product Name: TLK2 Rabbit Polyclonal Antibody
Catalog #: APRab18983



Western blot analysis of the lysates from HeLa cells using TLK2 antibody.



Western Blot analysis of various cells using TLK2 Polyclonal Antibody. Secondary antibody was diluted at 1:20000 cells nucleus extracted by Minute TM Cytoplasmic and Nuclear Fractionation kit (SC-003, Inventbiotech, MN, USA) .

Note

For research use only.