

Product Name: TLK1 Rabbit Polyclonal Antibody
Catalog #: APRab18982



Summary

Production Name	TLK1 Rabbit Polyclonal Antibody
Description	Rabbit Polyclonal Antibody
Host	Rabbit
Application	IF,ELISA
Reactivity	Human,Mouse

Performance

Conjugation	Unconjugated
Modification	Unmodified
Isotype	IgG
Clonality	Polyclonal
Form	Liquid
Storage	Store at 4°C short term. Aliquot and store at -20°C long term. Avoid freeze/thaw cycles.
Buffer	Liquid in PBS containing 50% glycerol, 0.5% BSA and 0.02% New type preservative N.
Purification	Affinity purification

Immunogen

Gene Name	TLK1
Alternative Names	TLK1; KIAA0137; Serine/threonine-protein kinase tousled-like 1; PKU-beta; Tousled-like kinase 1
Gene ID	9874.0
SwissProt ID	Q9UKI8.The antiserum was produced against synthesized peptide derived from human TLK1. AA range:730-779

Application

Dilution Ratio	IF 1:200-1:1000. ELISA: 1:5000.
Molecular Weight	

Background

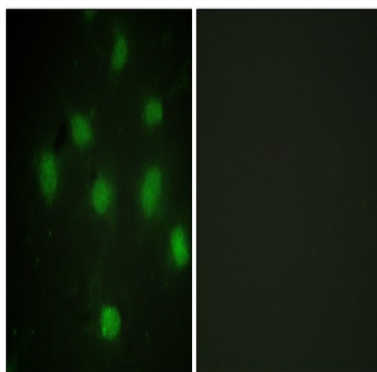
Product Name: TLK1 Rabbit Polyclonal Antibody
Catalog #: AP Rab18982



catalytic activity:ATP + a protein = ADP + a phosphoprotein.,cofactor:Magnesium.,enzyme regulation:Cell-cycle regulated, maximal activity in S-phase. Inactivated by phosphorylation at Ser-743, potentially by CHK1.,function:Rapidly and transiently inhibited by phosphorylation following the generation of DNA double-stranded breaks during S-phase. This is cell cycle checkpoint and ATM-pathway dependent and appears to regulate processes involved in chromatin assembly. Isoform 3 phosphorylates and enhances the stability of the t-SNARE SNAP23, augmenting its assembly with syntaxin. Isoform 3 protects the cells from the ionizing radiation by facilitating the repair of DSBs. In vitro, phosphorylates histone H3 at 'Ser-10',similarity:Belongs to the protein kinase superfamily.,similarity:Belongs to the protein kinase superfamily. Ser/Thr protein kinase family.,similarity:Contains 1 protein kinase domain.,subunit:Heterodimerizes with TLK2. Interacts with ASF1A and ASF1B.,tissue specificity:Widely expressed. Present in fetal placenta, liver, kidney and pancreas but not heart or skeletal muscle. Also found in adult cell lines. Isoform 3 is ubiquitously expressed in all tissues examined.,catalytic activity:ATP + a protein = ADP + a phosphoprotein.,cofactor:Magnesium.,enzyme regulation:Cell-cycle regulated, maximal activity in S-phase. Inactivated by phosphorylation at Ser-743, potentially by CHK1.,function:Rapidly and transiently inhibited by phosphorylation following the generation of DNA double-stranded breaks during S-phase. This is cell cycle checkpoint and ATM-pathway dependent and appears to regulate processes involved in chromatin assembly. Isoform 3 phosphorylates and enhances the stability of the t-SNARE SNAP23, augmenting its assembly with syntaxin. Isoform 3 protects the cells from the ionizing radiation by facilitating the repair of DSBs. In vitro, phosphorylates histone H3 at 'Ser-10',similarity:Belongs to the protein kinase superfamily.,similarity:Belongs to the protein kinase superfamily. Ser/Thr protein kinase family.,similarity:Contains 1 protein kinase domain.,subunit:Heterodimerizes with TLK2. Interacts with ASF1A and ASF1B.,tissue specificity:Widely expressed. Present in fetal placenta, liver, kidney and pancreas but not heart or skeletal muscle. Also found in adult cell lines. Isoform 3 is ubiquitously expressed in all tissues examined.,

Research Area

Image Data



Immunofluorescence analysis of COS7 cells, using TLK1 Antibody. The picture on the right is blocked with the synthesized peptide.

Product Name: TLK1 Rabbit Polyclonal Antibody
Catalog #: APRab18982



Note

For research use only.