

## Summary

<b>Production Name</b>	TLK1 Rabbit Polyclonal Antibody
<b>Description</b>	Rabbit Polyclonal Antibody
<b>Host</b>	Rabbit
<b>Application</b>	WB,ELISA
<b>Reactivity</b>	Human,Rat,Mouse

## Performance

<b>Conjugation</b>	Unconjugated
<b>Modification</b>	Unmodified
<b>Isotype</b>	IgG
<b>Clonality</b>	Polyclonal
<b>Form</b>	Liquid
<b>Storage</b>	Store at 4°C short term. Aliquot and store at -20°C long term. Avoid freeze/thaw cycles.
<b>Buffer</b>	Liquid in PBS containing 50% glycerol, 0.5% BSA and 0.02% New type preservative N.
<b>Purification</b>	Affinity purification

## Immunogen

<b>Gene Name</b>	TLK1
<b>Alternative Names</b>	TLK1; KIAA0137; Serine/threonine-protein kinase tousled-like 1; PKU-beta; Tousled-like kinase 1
<b>Gene ID</b>	9874.0
<b>SwissProt ID</b>	Q9UKI8.The antiserum was produced against synthesized peptide derived from human TLK1. AA range:201-250

## Application

<b>Dilution Ratio</b>	WB 1:500-2000 ELISA 2000-20000
<b>Molecular Weight</b>	87kD

**Product Name: TLK1 Rabbit Polyclonal Antibody**  
**Catalog #: APRab18981**

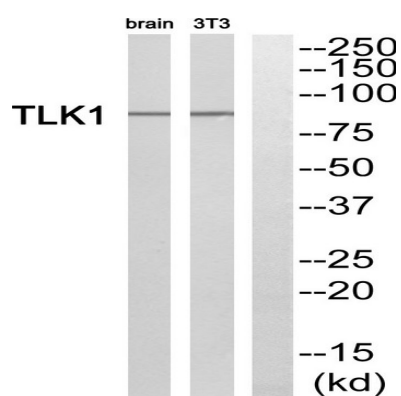


## Background

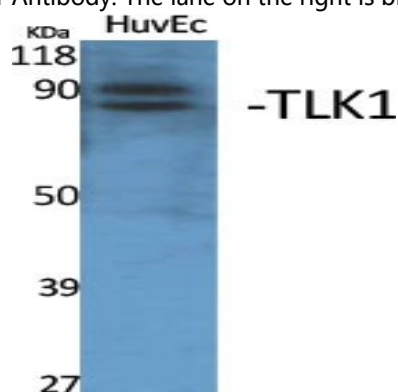
Serine/threonine-protein kinase tousel-like 1 encoded by TLK1 is a serine/threonine kinase that may be involved in the regulation of chromatin assembly. The encoded protein is only active when it is phosphorylated, and this phosphorylation is cell cycle-dependent, with the maximal activity of this protein coming during S phase. The catalytic activity of this protein is diminished by DNA damage and by blockage of DNA replication. Three transcript variants encoding different isoforms have been found for this gene.

## Research Area

## Image Data



Western blot analysis of TLK1 Antibody. The lane on the right is blocked with the TLK1 peptide.



Western Blot analysis of various cells using TLK1 Polyclonal Antibody. Secondary antibody was diluted at 1:20000

## Note

For research use only.