

**Product Name: TLE4 Rabbit Polyclonal Antibody**  
**Catalog #: APRab18980**



## Summary

<b>Production Name</b>	TLE4 Rabbit Polyclonal Antibody
<b>Description</b>	Rabbit Polyclonal Antibody
<b>Host</b>	Rabbit
<b>Application</b>	WB,ELISA
<b>Reactivity</b>	Human,Mouse,Rat

## Performance

<b>Conjugation</b>	Unconjugated
<b>Modification</b>	Unmodified
<b>Isotype</b>	IgG
<b>Clonality</b>	Polyclonal
<b>Form</b>	Liquid
<b>Storage</b>	Store at 4°C short term. Aliquot and store at -20°C long term. Avoid freeze/thaw cycles.
<b>Buffer</b>	Liquid in PBS containing 50% glycerol, 0.5% BSA and 0.02% New type preservative N.
<b>Purification</b>	Affinity purification

## Immunogen

<b>Gene Name</b>	TLE4
<b>Alternative Names</b>	TLE4; KIAA1261; Transducin-like enhancer protein 4
<b>Gene ID</b>	7091.0
<b>SwissProt ID</b>	Q04727.The antiserum was produced against synthesized peptide derived from human TLE4. AA range:161-210

## Application

<b>Dilution Ratio</b>	WB 1:500 - 1:2000. ELISA: 1:20000
<b>Molecular Weight</b>	83kD

## Background

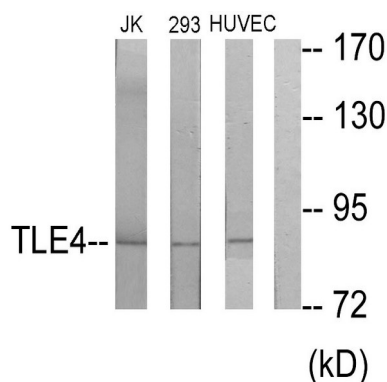
**Product Name: TLE4 Rabbit Polyclonal Antibody**  
**Catalog #: AP Rab18980**



caution:Product of a dubious CDS prediction. Found in the 3'UTR of TLE4. No homolog. Large scale identification of a phosphorylated peptide (PubMed:15302935) would require further confirmation.,function:Transcriptional corepressor that binds to a number of transcription factors. Inhibits the transcriptional activation mediated by PAX5, and by CTNNB1 and TCF family members in Wnt signaling. The effects of full-length TLE family members may be modulated by association with dominant-negative AES.,similarity:Belongs to the WD repeat Groucho/TLE family.,similarity:Contains 7 WD repeats.,subunit:Homooligomer and heterooligomer with other family members. Binds PAX5, LEF1, TCF7, TCF7L1 and TCF7L2.,tissue specificity:In all tissues examined, mostly in brain, and muscle.,caution:Product of a dubious CDS prediction. Found in the 3'UTR of TLE4. No homolog. Large scale identification of a phosphorylated peptide (PubMed:15302935) would require further confirmation.,function:Transcriptional corepressor that binds to a number of transcription factors. Inhibits the transcriptional activation mediated by PAX5, and by CTNNB1 and TCF family members in Wnt signaling. The effects of full-length TLE family members may be modulated by association with dominant-negative AES.,similarity:Belongs to the WD repeat Groucho/TLE family.,similarity:Contains 7 WD repeats.,subunit:Homooligomer and heterooligomer with other family members. Binds PAX5, LEF1, TCF7, TCF7L1 and TCF7L2.,tissue specificity:In all tissues examined, mostly in brain, and muscle.,

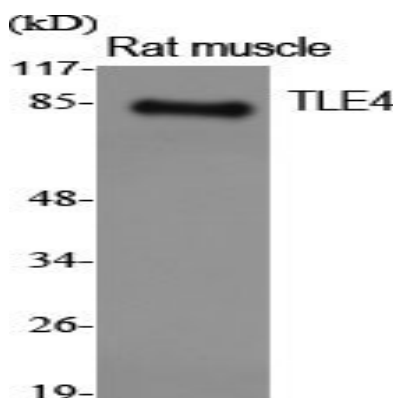
## Research Area

## Image Data



Western blot analysis of lysates from Jurkat, 293, and HUVEC cells, using TLE4 Antibody. The lane on the right is blocked with the synthesized peptide.

**Product Name: TLE4 Rabbit Polyclonal Antibody**  
**Catalog #: APRab18980**



Western Blot analysis of various cells using TLE4 Polyclonal Antibody. Secondary antibody was diluted at 1:20000 cells nucleus extracted by Minute TM Cytoplasmic and Nuclear Fractionation kit (SC-003, Inventbiotech, MN, USA) .

#### **Note**

For research use only.