

Product Name: TIF1 α Rabbit Polyclonal Antibody
Catalog #: APRab18928



Summary

Production Name	TIF1 α Rabbit Polyclonal Antibody
Description	Rabbit Polyclonal Antibody
Host	Rabbit
Application	IHC, WB, ELISA
Reactivity	Human, Mouse

Performance

Conjugation	Unconjugated
Modification	Unmodified
Isotype	IgG
Clonality	Polyclonal
Form	Liquid
Storage	Store at 4°C short term. Aliquot and store at -20°C long term. Avoid freeze/thaw cycles.
Buffer	Liquid in PBS containing 50% glycerol, 0.5% BSA and 0.02% New type preservative N.
Purification	Affinity purification

Immunogen

Gene Name	TRIM24
Alternative Names	TRIM24; RNF82; TIF1; TIF1A; Transcription intermediary factor 1-alpha; TIF1-alpha; E3 ubiquitin-protein ligase TRIM24; RING finger protein 82; Tripartite motif-containing protein 24
Gene ID	8805.0
SwissProt ID	O15164. The antiserum was produced against synthesized peptide derived from human TRIM24. AA range:1001-1050

Application

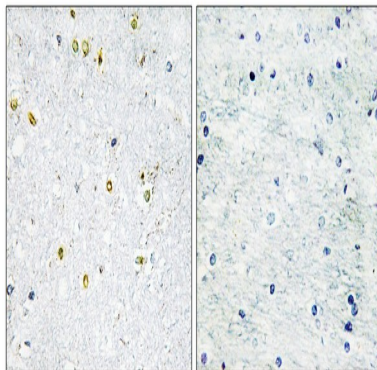
Dilution Ratio	WB 1:500 - 1:2000. IHC 1:100 - 1:300. ELISA: 1:20000..
Molecular Weight	117kD

Background

The protein encoded by this gene mediates transcriptional control by interaction with the activation function 2 (AF2) region of several nuclear receptors, including the estrogen, retinoic acid, and vitamin D3 receptors. The protein localizes to nuclear bodies and is thought to associate with chromatin and heterochromatin-associated factors. The protein is a member of the tripartite motif (TRIM) family. The TRIM motif includes three zinc-binding domains - a RING, a B-box type 1 and a B-box type 2 - and a coiled-coil region. Two alternatively spliced transcript variants encoding different isoforms have been described for this gene. [provided by RefSeq, Jul 2008],disease:A chromosomal aberration involving TIF1 is a cause of thyroid papillary carcinoma (PACT) [MIM:188550]. Translocation t(7;10)(q32;q11) with RET. The translocation generates the TIF1/RET (PTC6) oncogene.,function:Interacts selectively in vitro with the AF2-activating domain of the estrogen receptors. Association with DNA-bound estrogen receptors requires the presence of estradiol.,PTM:Phosphorylated upon DNA damage, probably by ATM or ATR.,similarity:Contains 1 bromo domain.,similarity:Contains 1 PHD-type zinc finger.,similarity:Contains 1 RING-type zinc finger.,similarity:Contains 2 B box-type zinc fingers.,subunit:Interacts with CBX1 and CBX3 (By similarity). Interacts with NR3C2.,

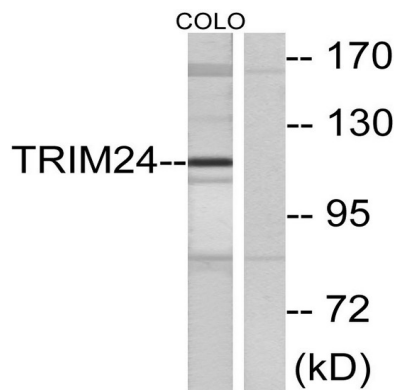
Research Area

Image Data

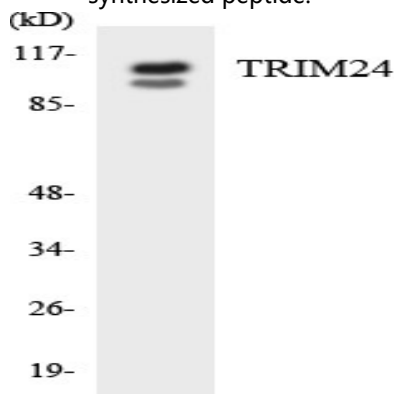


Immunohistochemistry analysis of paraffin-embedded human brain tissue, using TRIM24 Antibody. The picture on the right is blocked with the synthesized peptide.

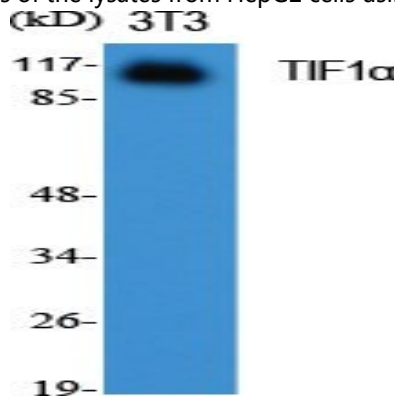
Product Name: TIF1 α Rabbit Polyclonal Antibody
Catalog #: APRab18928



Western blot analysis of lysates from COLO cells, using TRIM24 Antibody. The lane on the right is blocked with the synthesized peptide.

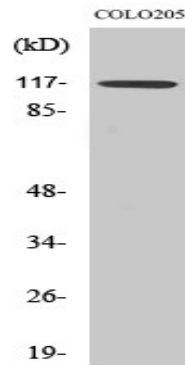


Western blot analysis of the lysates from HepG2 cells using TRIM24 antibody.



Western Blot analysis of various cells using TIF1 α Polyclonal Antibody diluted at 1: 1000

Product Name: TIF1 α Rabbit Polyclonal Antibody
Catalog #: APRab18928



Western Blot analysis of COLO205 cells using TIF1 α Polyclonal Antibody diluted at 1: 1000. Secondary antibody was diluted at 1:20000

Note

For research use only.