

**Product Name: Thrombospondin 4 Rabbit Polyclonal Antibody**  
**Catalog #: APRab18893**

---



## Summary

<b>Production Name</b>	Thrombospondin 4 Rabbit Polyclonal Antibody
<b>Description</b>	Rabbit Polyclonal Antibody
<b>Host</b>	Rabbit
<b>Application</b>	WB,IHC,ELISA
<b>Reactivity</b>	Human,Rat,Mouse

## Performance

<b>Conjugation</b>	Unconjugated
<b>Modification</b>	Unmodified
<b>Isotype</b>	IgG
<b>Clonality</b>	Polyclonal
<b>Form</b>	Liquid
<b>Storage</b>	Store at 4°C short term. Aliquot and store at -20°C long term. Avoid freeze/thaw cycles.
<b>Buffer</b>	Liquid in PBS containing 50% glycerol, 0.5% BSA and 0.02% New type preservative N.
<b>Purification</b>	Affinity purification

## Immunogen

<b>Gene Name</b>	THBS4
<b>Alternative Names</b>	THBS4; TSP4; Thrombospondin-4
<b>Gene ID</b>	7060.0
<b>SwissProt ID</b>	P35443.The antiserum was produced against synthesized peptide derived from human THBS4. AA range:561-610

## Application

<b>Dilution Ratio</b>	WB 1:500-2000;IHC-p 1:100-500;ELISA 1:5000-20000
<b>Molecular Weight</b>	

**Product Name: Thrombospondin 4 Rabbit Polyclonal Antibody**  
**Catalog #: AP Rab18893**



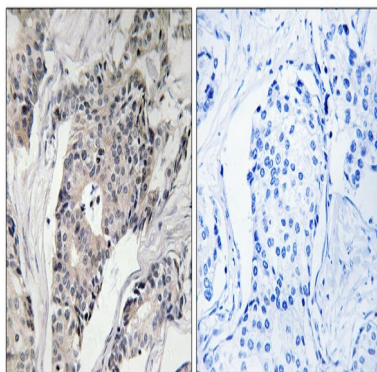
## Background

thrombospondin 4 (THBS4) Homo sapiens The protein encoded by this gene belongs to the thrombospondin protein family. Thrombospondin family members are adhesive glycoproteins that mediate cell-to-cell and cell-to-matrix interactions. This protein forms a pentamer and can bind to heparin and calcium. It is involved in local signaling in the developing and adult nervous system, and it contributes to spinal sensitization and neuropathic pain states. This gene is activated during the stromal response to invasive breast cancer. It may also play a role in inflammatory responses in Alzheimer's disease. Alternative splicing results in multiple transcript variants. [provided by RefSeq, Apr 2015], function: Adhesive glycoprotein that mediates cell-to-cell and cell-to-matrix interactions. Can bind to fibrinogen, fibronectin, laminin and type V collagen., similarity: Belongs to the thrombospondin family., similarity: Contains 1 TSP C-terminal (TSPC) domain., similarity: Contains 1 TSP N-terminal (TSPN) domain., similarity: Contains 4 EGF-like domains., similarity: Contains 8 TSP type-3 repeats., subunit: Homopentamer; disulfide-linked.,

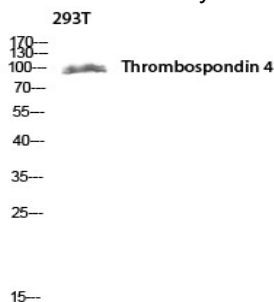
## Research Area

TGF-beta; Focal adhesion; ECM-receptor interaction;

## Image Data



Immunohistochemistry analysis of paraffin-embedded human breast carcinoma, using THBS4 Antibody. The picture on the right is blocked with the synthesized peptide.



**Product Name: Thrombospondin 4 Rabbit Polyclonal  
Antibody**  
**Catalog #: APRab18893**



---

Western blot analysis of 293T lysis using Thrombospondin 4 antibody. Antibody was diluted at 1:1000

**Note**

For research use only.