

Summary

Production Name	TESK2 Rabbit Polyclonal Antibody
Description	Rabbit Polyclonal Antibody
Host	Rabbit
Application	WB,ELISA
Reactivity	Human,Mouse,Rat

Performance

Conjugation	Unconjugated
Modification	Unmodified
Isotype	IgG
Clonality	Polyclonal
Form	Liquid
Storage	Store at 4°C short term. Aliquot and store at -20°C long term. Avoid freeze/thaw cycles.
Buffer	Liquid in PBS containing 50% glycerol, 0.5% BSA and 0.02% New type preservative N.
Purification	Affinity purification

Immunogen

Gene Name	TESK2
Alternative Names	TESK2; Dual specificity testis-specific protein kinase 2; Testicular protein kinase 2
Gene ID	10420.0
SwissProt ID	Q96S53.The antiserum was produced against synthesized peptide derived from human TESK2. AA range:201-250

Application

Dilution Ratio	WB 1:500 - 1:2000. ELISA: 1:20000
Molecular Weight	65kD

Background

Product Name: TESK2 Rabbit Polyclonal Antibody
Catalog #: APRab18801

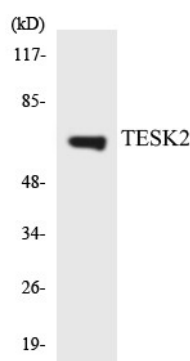


testis-specific kinase 2(TESK2) Homo sapiens This gene product is a serine/threonine protein kinase that contains an N-terminal protein kinase domain that is structurally similar to the kinase domains of testis-specific protein kinase-1 and the LIM motif-containing protein kinases (LIMKs). Its overall structure is most related to the former, indicating that it belongs to the TESK subgroup of the LIMK/TESK family of protein kinases. This gene is predominantly expressed in testis and prostate. The developmental expression pattern of the rat gene in testis suggests an important role for this gene in meiotic stages and/or early stages of spermiogenesis. Alternative splicing results in multiple transcript variants. [provided by RefSeq, Mar 2016],alternative products:Experimental confirmation may be lacking for some isoforms,catalytic activity:ATP + a protein = ADP + a phosphoprotein.,cofactor:Magnesium.,cofactor:Manganese.,enzyme regulation:Activated by autophosphorylation on Ser-219,function:Dual specificity protein kinase activity catalyzing autophosphorylation and phosphorylation of exogenous substrates on both serine/threonine and tyrosine residues. Phosphorylates cofilin at 'Ser-3'. May play an important role in spermatogenesis.,similarity:Belongs to the protein kinase superfamily. TKL Ser/Thr protein kinase family.,similarity:Contains 1 protein kinase domain.,tissue specificity:Predominantly expressed in testis and prostate. Found predominantly in non-germinal Sertoli cells.,

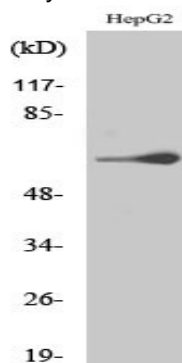
Research Area

Regulation of Microtubule Dynamics

Image Data



Western blot analysis of the lysates from K562 cells using TESK2 antibody.



Product Name: TESK2 Rabbit Polyclonal Antibody
Catalog #: APRab18801



Western Blot analysis of various cells using TESK2 Polyclonal Antibody

Note

For research use only.