

## Summary

<b>Production Name</b>	TDE2L Rabbit Polyclonal Antibody
<b>Description</b>	Rabbit Polyclonal Antibody
<b>Host</b>	Rabbit
<b>Application</b>	IF, WB, ELISA
<b>Reactivity</b>	Human, Mouse, Rat

## Performance

<b>Conjugation</b>	Unconjugated
<b>Modification</b>	Unmodified
<b>Isotype</b>	IgG
<b>Clonality</b>	Polyclonal
<b>Form</b>	Liquid
<b>Storage</b>	Store at 4°C short term. Aliquot and store at -20°C long term. Avoid freeze/thaw cycles.
<b>Buffer</b>	Liquid in PBS containing 50% glycerol, 0.5% BSA and 0.02% New type preservative N.
<b>Purification</b>	Affinity purification

## Immunogen

<b>Gene Name</b>	SERINC2
<b>Alternative Names</b>	SERINC2; TDE2L; FKSG84; Serine incorporator 2; Tumor differentially expressed protein 2-like
<b>Gene ID</b>	347735.0
<b>SwissProt ID</b>	Q96SA4. The antiserum was produced against synthesized peptide derived from human SERC2. AA range:341-390

## Application

<b>Dilution Ratio</b>	WB 1:500 - 1:2000. IF 1:200 - 1:1000. ELISA: 1:40000. Not yet tested in other applications.
<b>Molecular Weight</b>	55kD

**Product Name: TDE2L Rabbit Polyclonal Antibody**  
**Catalog #: APRab18759**

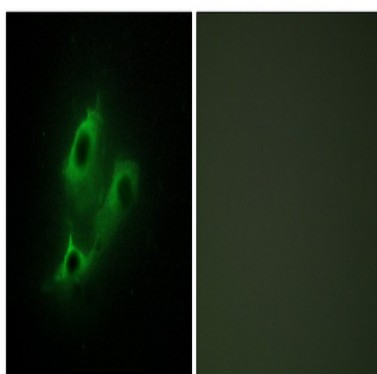


## Background

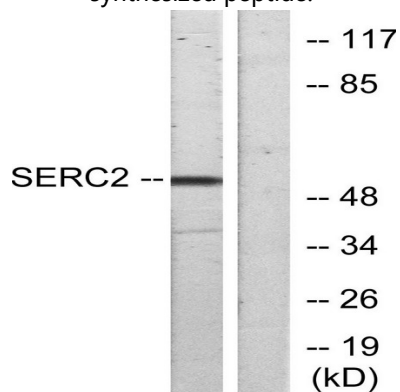
similarity:Belongs to the TDE1 family.,similarity:Belongs to the TDE1 family.,

## Research Area

## Image Data

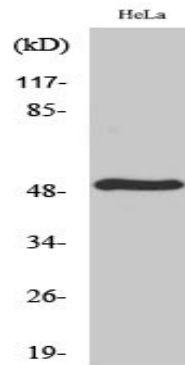


Immunofluorescence analysis of NIH/3T3 cells, using SERC2 Antibody. The picture on the right is blocked with the synthesized peptide.



Western blot analysis of lysates from HeLa cells, using SERC2 Antibody. The lane on the right is blocked with the synthesized peptide.

**Product Name: TDE2L Rabbit Polyclonal Antibody**  
**Catalog #: APRab18759**



Western Blot analysis of various cells using TDE2L Polyclonal Antibody

**Note**

For research use only.