

Summary

Production Name	Tctex5 Rabbit Polyclonal Antibody
Description	Rabbit Polyclonal Antibody
Host	Rabbit
Application	IHC,ELISA
Reactivity	Human,Mouse,Rat

Performance

Conjugation	Unconjugated
Modification	Unmodified
Isotype	IgG
Clonality	Polyclonal
Form	Liquid
Storage	Store at 4°C short term. Aliquot and store at -20°C long term. Avoid freeze/thaw cycles.
Buffer	Liquid in PBS containing 50% glycerol, 0.5% BSA and 0.02% New type preservative N.
Purification	Affinity purification

Immunogen

Gene Name	PPP1R11
Alternative Names	PPP1R11; HCGV; TCTE5; Protein phosphatase 1 regulatory subunit 11; Hemochromatosis candidate gene V protein; HCG V; Protein phosphatase inhibitor 3
Gene ID	6992.0
SwissProt ID	O60927.The antiserum was produced against synthesized peptide derived from human PPP1R11. AA range:71-120

Application

Dilution Ratio	IHC 1:100-1:300 ELISA: 1:40000
Molecular Weight	

Background

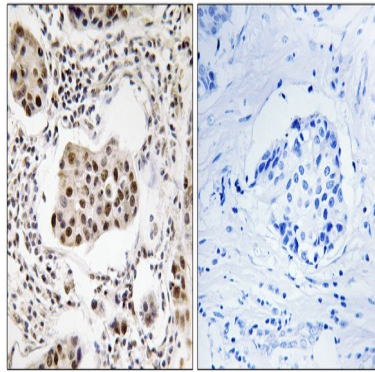
Product Name: Tctex5 Rabbit Polyclonal Antibody
Catalog #: APRab18755



This gene encodes a specific inhibitor of protein phosphatase-1 (PP1) with a differential sensitivity toward the metal-independent and metal-dependent forms of PP1. The gene is located within the major histocompatibility complex class I region on chromosome 6. [provided by RefSeq, Jul 2008],function:Inhibitor of protein phosphatase 1.,tissue specificity:Widely expressed.,

Research Area

Image Data



Immunohistochemistry analysis of paraffin-embedded human breast carcinoma tissue, using PPP1R11 Antibody. The picture on the right is blocked with the synthesized peptide.

Note

For research use only.