

Product Name: TCP-1 θ Rabbit Polyclonal Antibody
Catalog #: APRab18748



Summary

| | |
|------------------------|---|
| Production Name | TCP-1 θ Rabbit Polyclonal Antibody |
| Description | Rabbit Polyclonal Antibody |
| Host | Rabbit |
| Application | WB,ELISA |
| Reactivity | Human,Mouse |

Performance

| | |
|---------------------|--|
| Conjugation | Unconjugated |
| Modification | Unmodified |
| Isotype | IgG |
| Clonality | Polyclonal |
| Form | Liquid |
| Storage | Store at 4°C short term. Aliquot and store at -20°C long term. Avoid freeze/thaw cycles. |
| Buffer | Liquid in PBS containing 50% glycerol, 0.5% BSA and 0.02% New type preservative N. |
| Purification | Affinity purification |

Immunogen

| | |
|--------------------------|---|
| Gene Name | CCT8 |
| Alternative Names | CCT8; C21orf112; CCTQ; KIAA0002; T-complex protein 1 subunit theta; TCP-1-theta; CCT-theta; Renal carcinoma antigen NY-REN-15 |
| Gene ID | 10694.0 |
| SwissProt ID | P50990.The antiserum was produced against synthesized peptide derived from human CCT8. AA range:361-410 |

Application

| | |
|-------------------------|---|
| Dilution Ratio | WB 1:500 - 1:2000. ELISA: 1:5000. Not yet tested in other applications. |
| Molecular Weight | 60kD |

Product Name: TCP-1 θ Rabbit Polyclonal Antibody
Catalog #: APRab18748

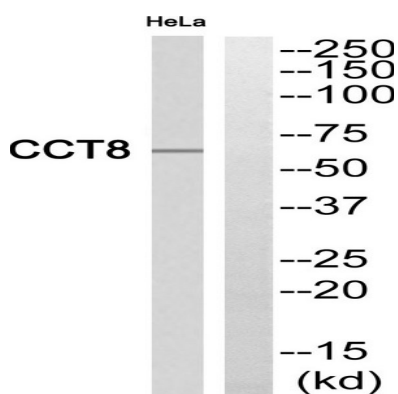


Background

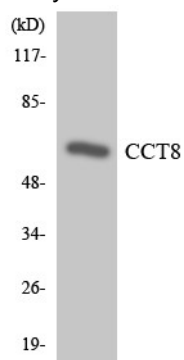
This gene encodes the theta subunit of the CCT chaperonin, which is abundant in the eukaryotic cytosol and may be involved in the transport and assembly of newly synthesized proteins. Alternative splicing results in multiple transcript variants of this gene. A pseudogene related to this gene is located on chromosome 1. [provided by RefSeq, Sep 2013],function:Molecular chaperone; assist the folding of proteins upon ATP hydrolysis. Known to play a role, in vitro, in the folding of actin and tubulin.,similarity:Belongs to the TCP-1 chaperonin family.,subunit:Heterooligomeric complex of about 850 to 900 kDa that forms two stacked rings, 12 to 16 nm in diameter. Interacts with PACRG.,

Research Area

Image Data

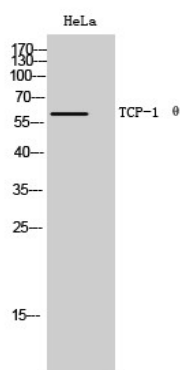


Western blot analysis of CCT8 Antibody. The lane on the right is blocked with the CCT8 peptide.



Western blot analysis of the lysates from HeLa cells using CCT8 antibody.

Product Name: TCP-1 θ Rabbit Polyclonal Antibody
Catalog #: APRab18748



Western Blot analysis of HeLa cells using TCP-1 θ Polyclonal Antibody

Note

For research use only.