

Product Name: TCFL5 Rabbit Polyclonal Antibody
Catalog #: APRab18738



Summary

Production Name	TCFL5 Rabbit Polyclonal Antibody
Description	Rabbit Polyclonal Antibody
Host	Rabbit
Application	WB,ELISA
Reactivity	Human,Mouse

Performance

Conjugation	Unconjugated
Modification	Unmodified
Isotype	IgG
Clonality	Polyclonal
Form	Liquid
Storage	Store at 4°C short term. Aliquot and store at -20°C long term. Avoid freeze/thaw cycles.
Buffer	Liquid in PBS containing 50% glycerol, 0.5% BSA and 0.02% New type preservative N.
Purification	Affinity purification

Immunogen

Gene Name	TCFL5
Alternative Names	TCFL5; CHA; E2BP1; Transcription factor-like 5 protein; Cha transcription factor; HPV-16 E2-binding protein 1; E2BP-1
Gene ID	10732.0
SwissProt ID	Q9UL49.The antiserum was produced against synthesized peptide derived from human TCFL5. AA range:311-360

Application

Dilution Ratio	WB 1:500 - 1:2000. ELISA: 1:20000
Molecular Weight	48kD

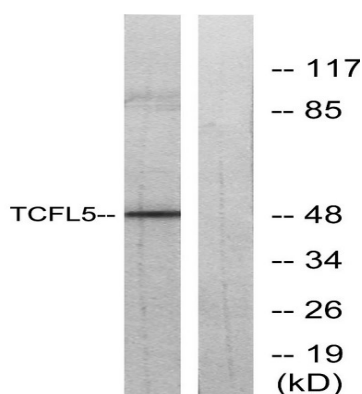
Background

developmental stage:Isoform 3 is specifically expressed in primary spermatocytes at the pachytene stage, but not those at leptonema stage. Not expressed in other testicular cells, including spermatogonia located in the basal compartment of the seminiferous tubule or spermatids.,disease:Antibodies against TCFL5 are present in sera from patients with Chagas' disease, an autoimmune disease caused by Trypanosoma cruzi. Two different epitopes that mimic Trypanosoma cruzi antigens have been identified: R1 and R3 epitopes, which are recognized by T- and B-cells, respectively.,function:Putative transcription factor. Isoform 3 may play a role in early spermatogenesis.,similarity:Contains 1 basic helix-loop-helix (bHLH) domain.,subunit:Efficient DNA binding requires dimerization with another bHLH protein.,tissue specificity:Isoform 3 is testis specific. Isoform 2 is pancreas specific.,developmental stage:Isoform 3 is specifically expressed in primary spermatocytes at the pachytene stage, but not those at leptonema stage. Not expressed in other testicular cells, including spermatogonia located in the basal compartment of the seminiferous tubule or spermatids.,disease:Antibodies against TCFL5 are present in sera from patients with Chagas' disease, an autoimmune disease caused by Trypanosoma cruzi. Two different epitopes that mimic Trypanosoma cruzi antigens have been identified: R1 and R3 epitopes, which are recognized by T- and B-cells, respectively.,function:Putative transcription factor. Isoform 3 may play a role in early spermatogenesis.,similarity:Contains 1 basic helix-loop-helix (bHLH) domain.,subunit:Efficient DNA binding requires dimerization with another bHLH protein.,tissue specificity:Isoform 3 is testis specific. Isoform 2 is pancreas specific.,

Research Area

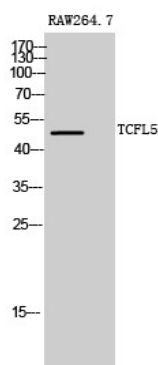
Stem cell pathway; Protein_Acetylation

Image Data



Western blot analysis of lysates from RAW264.7 cells, using TCFL5 Antibody. The lane on the right is blocked with the synthesized peptide.

Product Name: TCFL5 Rabbit Polyclonal Antibody
Catalog #: APRab18738



Western Blot analysis of RAW264.7 cells using TCFL5 Polyclonal Antibody cells nucleus extracted by Minute TM Cytoplasmic and Nuclear Fractionation kit (SC-003, Inventbiotech, MN, USA) .

Note

For research use only.