

Product Name: TCEAL3/5/6 Rabbit Polyclonal Antibody
Catalog #: APRab18724



Summary

Production Name	TCEAL3/5/6 Rabbit Polyclonal Antibody
Description	Rabbit Polyclonal Antibody
Host	Rabbit
Application	IHC,ELISA
Reactivity	Human,Rat,Mouse

Performance

Conjugation	Unconjugated
Modification	Unmodified
Isotype	IgG
Clonality	Polyclonal
Form	Liquid
Storage	Store at 4°C short term. Aliquot and store at -20°C long term. Avoid freeze/thaw cycles.
Buffer	Liquid in PBS containing 50% glycerol, 0.5% BSA and 0.02% New type preservative N.
Purification	Affinity purification

Immunogen

Gene Name	TCEAL3/5/6 TCEAL3; MSTP072; Transcription elongation factor A protein-like 3; TCEA-like protein 3;
Alternative Names	Transcription elongation factor S-II protein-like 3; TCEAL5; Transcription elongation factor A protein-like 5; TCEA-like protein 5; Transcription elonga
Gene ID	85012.0
SwissProt ID	Q969E4/Q5H9L2/Q6IPX3.The antiserum was produced against synthesized peptide derived from human TCEAL3. AA range:141-190

Application

Dilution Ratio	IHC 1:100-1:300 ELISA: 1:40000
Molecular Weight	

Product Name: TCEAL3/5/6 Rabbit Polyclonal Antibody
Catalog #: APRab18724

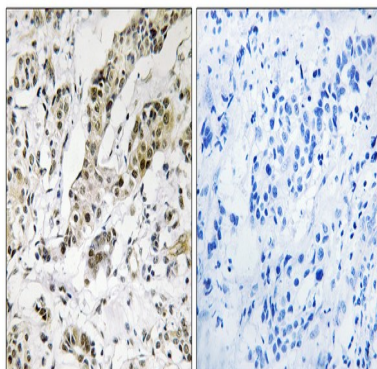


Background

This gene encodes a member of the transcription elongation factor A (SII)-like (TCEAL) gene family. Members of this family contain TFA domains and may function as nuclear phosphoproteins that modulate transcription in a promoter context-dependent manner. Multiple family members are located on the X chromosome. Alternative splicing results in multiple transcript variants encoding a single isoform. [provided by RefSeq, Jul 2008],function:May be involved in transcriptional regulation.,PTM:Phosphorylated upon DNA damage, probably by ATM or ATR.,similarity:Belongs to the TFS-II family. TFA subfamily.,

Research Area

Image Data



Immunohistochemistry analysis of paraffin-embedded human breast carcinoma, using TCEAL3/5/6 Antibody. The picture on the right is blocked with the synthesized peptide.

Note

For research use only.