

Product Name: TBX1 Rabbit Polyclonal Antibody
Catalog #: APRab18698



Summary

Production Name	TBX1 Rabbit Polyclonal Antibody
Description	Rabbit Polyclonal Antibody
Host	Rabbit
Application	IF, WB,
Reactivity	Human, Rat, Mouse

Performance

Conjugation	Unconjugated
Modification	Unmodified
Isotype	IgG
Clonality	Polyclonal
Form	Liquid
Storage	Store at 4°C short term. Aliquot and store at -20°C long term. Avoid freeze/thaw cycles.
Buffer	Liquid in PBS containing 50% glycerol, 0.5% BSA and 0.02% New type preservative N.
Purification	Affinity purification

Immunogen

Gene Name	TBX1
Alternative Names	TBX1; T-box transcription factor TBX1; T-box protein 1; Testis-specific T-box protein
Gene ID	6899.0
SwissProt ID	O43435. The antiserum was produced against synthesized peptide derived from human TBX1. AA range: 311-360

Application

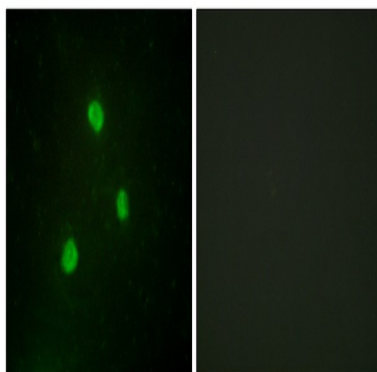
Dilution Ratio	WB 1:500 - 1:2000. IF 1:200 - 1:1000. ELISA: 1:20000. Not yet tested in other applications.
Molecular Weight	43kD

Background

This gene is a member of a phylogenetically conserved family of genes that share a common DNA-binding domain, the T-box. T-box genes encode transcription factors involved in the regulation of developmental processes. This gene product shares 98% amino acid sequence identity with the mouse ortholog. DiGeorge syndrome (DGS)/velocardiofacial syndrome (VCFS), a common congenital disorder characterized by neural-crest-related developmental defects, has been associated with deletions of chromosome 22q11.2, where this gene has been mapped. Studies using mouse models of DiGeorge syndrome suggest a major role for this gene in the molecular etiology of DGS/VCFS. Several alternatively spliced transcript variants encoding different isoforms have been described for this gene. [provided by RefSeq, Jul 2008],disease:Defects in TBX1 are a cause of conotruncal heart malformations (CTHM) [MIM:217095]. CTMH consist of cardiac outflow tract defects, such as tetralogy of Fallot, pulmonary atresia, double-outlet right ventricle, truncus arteriosus communis, and aortic arch anomalies.,disease:Defects in TBX1 are a cause of DiGeorge syndrome (DGS) [MIM:188400],disease:Defects in TBX1 are a cause of velocardiofacial syndrome (VCFS) [MIM:192430],disease:Haploinsufficiency of the TBX1 gene is responsible for most of the physical malformations present in DiGeorge syndrome (DGS) and velocardiofacial syndrome (VCFS) [MIM:188400, 192430]. DGS is characterized by the association of several malformations: hypoplastic thymus and parathyroid glands, congenital conotruncal cardiopathy, and a subtle but characteristic facial dysmorphism. VCFS is marked by the association of congenital conotruncal heart defects, cleft palate or velar insufficiency, facial dysmorphism and learning difficulties. It is now accepted that these two syndromes represent two forms of clinical expression of the same entity manifesting at different stages of life.,function:Probable transcriptional regulator involved in developmental processes. Is required for normal development of the pharyngeal arch arteries.,similarity:Contains 1 T-box DNA-binding domain.,

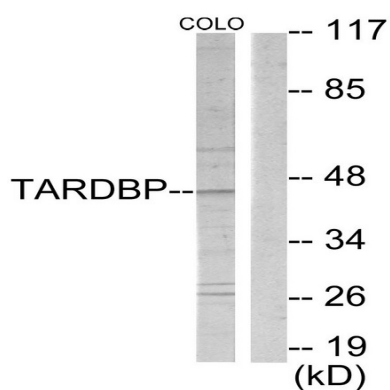
Research Area

Image Data

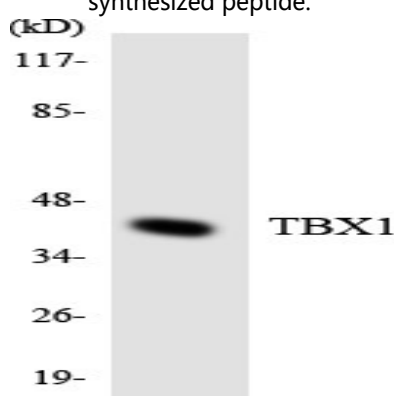


Immunofluorescence analysis of A549 cells, using TBX1 Antibody. The picture on the right is blocked with the synthesized peptide.

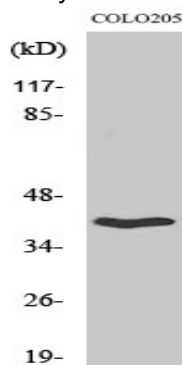
Product Name: TBX1 Rabbit Polyclonal Antibody
Catalog #: APRab18698



Western blot analysis of lysates from COLO205 cells, using TBX1 Antibody. The lane on the right is blocked with the synthesized peptide.



Western blot analysis of the lysates from 293 cells using TBX1 antibody.



Western Blot analysis of various cells using TBX1 Polyclonal Antibody cells nucleus extracted by Minute TM Cytoplasmic and Nuclear Fractionation kit (SC-003, Invent biotech, MN, USA) .

Note

For research use only.