

## Summary

<b>Production Name</b>	TADA2L Rabbit Polyclonal Antibody
<b>Description</b>	Rabbit Polyclonal Antibody
<b>Host</b>	Rabbit
<b>Application</b>	WB,ELISA
<b>Reactivity</b>	Human,Mouse,Rat,Monkey

## Performance

<b>Conjugation</b>	Unconjugated
<b>Modification</b>	Unmodified
<b>Isotype</b>	IgG
<b>Clonality</b>	Polyclonal
<b>Form</b>	Liquid
<b>Storage</b>	Store at 4°C short term. Aliquot and store at -20°C long term. Avoid freeze/thaw cycles.
<b>Buffer</b>	Liquid in PBS containing 50% glycerol, 0.5% BSA and 0.02% New type preservative N.
<b>Purification</b>	Affinity purification

## Immunogen

<b>Gene Name</b>	TADA2A
<b>Alternative Names</b>	TADA2A; TADA2L; KL04P; Transcriptional adapter 2-alpha; Transcriptional adapter 2-like; ADA2-like protein
<b>Gene ID</b>	6871.0
<b>SwissProt ID</b>	O75478.The antiserum was produced against synthesized peptide derived from human ADA2L. AA range:206-255

## Application

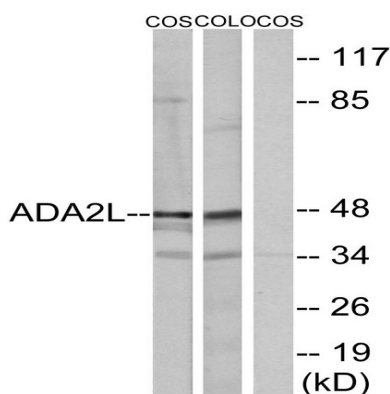
<b>Dilution Ratio</b>	WB 1:500 - 1:2000. ELISA: 1:10000. Not yet tested in other applications.
<b>Molecular Weight</b>	47kD

## Background

Many DNA-binding transcriptional activator proteins enhance the initiation rate of RNA polymerase II-mediated gene transcription by interacting functionally with the general transcription machinery bound at the basal promoter. Adaptor proteins are usually required for this activation, possibly to acetylate and destabilize nucleosomes, thereby relieving chromatin constraints at the promoter. The protein encoded by this gene is a transcriptional activator adaptor and has been found to be part of the PCAF histone acetylase complex. Several alternatively spliced transcript variants encoding different isoforms of this gene have been described, but the full-length nature of some of these variants has not been determined. [provided by RefSeq, Oct 2009],function: Binds double-stranded DNA. Binds dinucleosomes, probably at the linker region between neighboring nucleosomes. Plays a role in chromatin remodeling (By similarity). Required for the function of some acidic activation domains, which activate transcription from a distant site.,similarity: Contains 1 SANT domain.,similarity: Contains 1 SWIRM domain.,subunit: Interacts with GCN5 and NR3C1. Associated with the P/CAF protein in the PCAF complex. Component of the PCAF complex, at least composed of TADA2L/ADA2, TADA3L/ADA3, TAF5L/PAF65-beta, TAF6L/PAF65-alpha, TAF10/TAFII30, TAF12/TAFII20, TAF9/TAFII31 and TRRAP.,tissue specificity: Expressed in all tissues, but most abundantly in testis.,

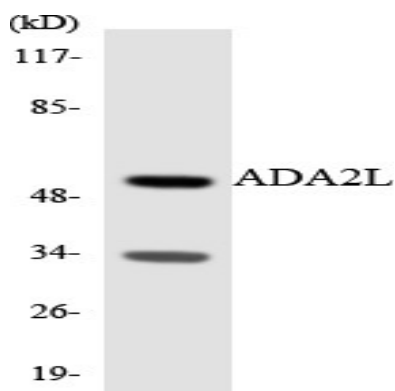
## Research Area

## Image Data

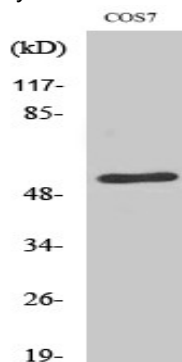


Western blot analysis of lysates from COS7 and COLO205 cells, using ADA2L Antibody. The lane on the right is blocked with the synthesized peptide.

**Product Name: TADA2L Rabbit Polyclonal Antibody**  
**Catalog #: APRab18604**



Western blot analysis of the lysates from RAW264.7 cells using ADA2L antibody.



Western Blot analysis of various cells using TADA2L Polyclonal Antibody diluted at 1: 2000 cells nucleus extracted by Minute  
TM Cytoplasmic and Nuclear Fractionation kit (SC-003, Invent biotech, MN, USA) .

## **Note**

For research use only.