

Product Name: Synaptotagmin XI Rabbit Polyclonal Antibody
Catalog #: AP Rab18498

Summary

Production Name	Synaptotagmin XI Rabbit Polyclonal Antibody
Description	Rabbit Polyclonal Antibody
Host	Rabbit
Application	WB, ELISA
Reactivity	Human, Mouse, Rat

Performance

Conjugation	Unconjugated
Modification	Unmodified
Isotype	IgG
Clonality	Polyclonal
Form	Liquid
Storage	Store at 4°C short term. Aliquot and store at -20°C long term. Avoid freeze/thaw cycles.
Buffer	Liquid in PBS containing 50% glycerol, 0.5% BSA and 0.02% New type preservative N.
Purification	Affinity purification

Immunogen

Gene Name	SYT11
Alternative Names	SYT11; KIAA0080; Synaptotagmin-11; Synaptotagmin XI; SytXI
Gene ID	23208.0
SwissProt ID	Q9BT88. The antiserum was produced against synthesized peptide derived from human SYT11. AA range: 181-230

Application

Dilution Ratio	WB 1:500 - 1:2000. ELISA: 1:10000
Molecular Weight	48kD

Product Name: Synaptotagmin XI Rabbit Polyclonal Antibody
Catalog #: AP Rab18498

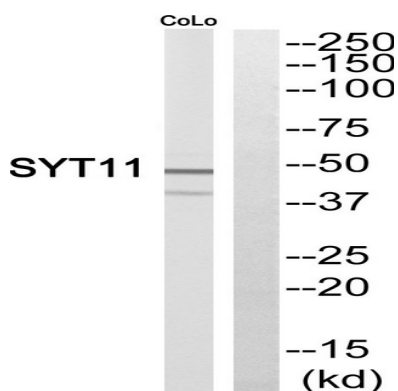


Background

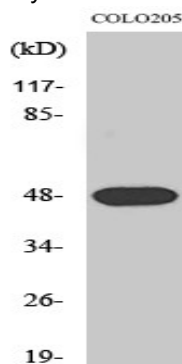
synaptotagmin 11 (SYT11) Homo sapiens This gene is a member of the synaptotagmin gene family and encodes a protein similar to other family members that are known calcium sensors and mediate calcium-dependent regulation of membrane trafficking in synaptic transmission. The encoded protein is also a substrate for ubiquitin-E3-ligase parkin. The gene has previously been referred to as synaptotagmin XII but has been renamed synaptotagmin XI to be consistent with mouse and rat official nomenclature. [provided by RefSeq, Apr 2010], cofactor: Binds 3 calcium ions per subunit. The ions are bound to the C2 domains, function: May be involved in Ca(2+)-dependent exocytosis of secretory vesicles through Ca(2+) and phospholipid binding to the C2 domain or may serve as Ca(2+) sensors in the process of vesicular trafficking and exocytosis, PTM: Ubiquitinated and targeted to the proteasome complex for degradation, similarity: Belongs to the synaptotagmin family, similarity: Contains 2 C2 domains, subcellular location: In substantia nigra, observed in neuronal cell bodies and neurites. Found in the core of the Lewy bodies in the brain of sporadic Parkinson disease patients, subunit: Homodimer. Can also form heterodimers (By similarity). Interacts with PARK2,

Research Area

Image Data



Western blot analysis of SYT11 Antibody. The lane on the right is blocked with the SYT11 peptide.



**Product Name: Synaptotagmin XI Rabbit Polyclonal
Antibody**
Catalog #: APRab18498



Western Blot analysis of various cells using Synaptotagmin XI Polyclonal Antibody

Note

For research use only.