

Product Name: Synaptotagmin X Rabbit Polyclonal Antibody
Catalog #: APRab18497

Summary

Production Name	Synaptotagmin X Rabbit Polyclonal Antibody
Description	Rabbit Polyclonal Antibody
Host	Rabbit
Application	WB
Reactivity	Human,Mouse,Rat

Performance

Conjugation	Unconjugated
Modification	Unmodified
Isotype	IgG
Clonality	Polyclonal
Form	Liquid
Storage	Store at 4°C short term. Aliquot and store at -20°C long term. Avoid freeze/thaw cycles.
Buffer	Liquid in PBS containing 50% glycerol, 0.5% BSA and 0.02% New type preservative N.
Purification	Affinity purification

Immunogen

Gene Name	SYT10
Alternative Names	SYT10; Synaptotagmin-10; Synaptotagmin X; SytX
Gene ID	341359.0
SwissProt ID	Q6XYQ8.Synthesized peptide derived from Synaptotagmin X . at AA range: 380-460

Application

Dilution Ratio	WB 1:500-2000
Molecular Weight	55kD

Background

cofactor: Binds 3 calcium ions per subunit. The ions are bound to the C2 domains.,function: May be involved in Ca(2+)-

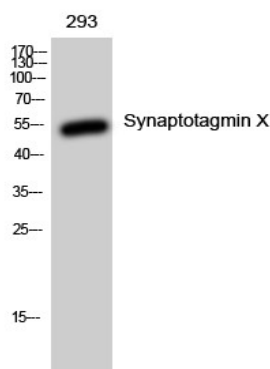
Product Name: Synaptotagmin X Rabbit Polyclonal Antibody
Catalog #: APRab18497



dependent exocytosis of secretory vesicles through Ca^{2+} and phospholipid binding to the C2 domain or may serve as Ca^{2+} sensors in the process of vesicular trafficking and exocytosis.,similarity:Belongs to the synaptotagmin family.,similarity:Contains 2 C2 domains.,subunit:Homodimer. Can also form heterodimers.,tissue specificity:Expressed only in pancreas, lung and kidney.,cofactor:Binds 3 calcium ions per subunit. The ions are bound to the C2 domains.,function:May be involved in Ca^{2+} -dependent exocytosis of secretory vesicles through Ca^{2+} and phospholipid binding to the C2 domain or may serve as Ca^{2+} sensors in the process of vesicular trafficking and exocytosis.,similarity:Belongs to the synaptotagmin family.,similarity:Contains 2 C2 domains.,subunit:Homodimer. Can also form heterodimers.,tissue specificity:Expressed only in pancreas, lung and kidney.,

Research Area

Image Data



Western Blot analysis of 293 cells using Synaptotagmin X Polyclonal Antibody

Note

For research use only.