

Product Name: SV2C Rabbit Polyclonal Antibody
Catalog #: APRab18464



Summary

Production Name	SV2C Rabbit Polyclonal Antibody
Description	Rabbit Polyclonal Antibody
Host	Rabbit
Application	WB,IHC,ELISA
Reactivity	Human,Mouse,Rat

Performance

Conjugation	Unconjugated
Modification	Unmodified
Isotype	IgG
Clonality	Polyclonal
Form	Liquid
Storage	Store at 4°C short term. Aliquot and store at -20°C long term. Avoid freeze/thaw cycles.
Buffer	Liquid in PBS containing 50% glycerol, 0.5% BSA and 0.02% New type preservative N.
Purification	Affinity purification

Immunogen

Gene Name	SV2C
Alternative Names	SV2C; KIAA1054; Synaptic vesicle glycoprotein 2C
Gene ID	22987.0
SwissProt ID	Q496J9.Synthesized peptide derived from the Internal region of human SV2C. AA range 330-390

Application

Dilution Ratio	WB 1:500 - 1:2000. IHC-p: 1:100-300 ELISA: 1:20000..
Molecular Weight	82kD

Background

Product Name: SV2C Rabbit Polyclonal Antibody
Catalog #: APRab18464

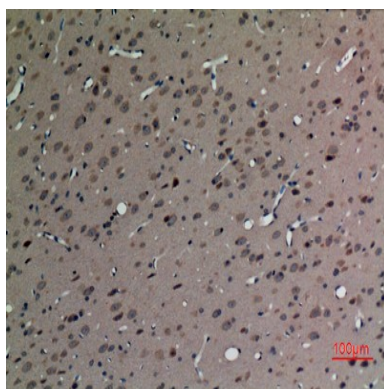


function: Plays a role in the control of regulated secretion in neural and endocrine cells, enhancing selectively low-frequency neurotransmission. Positively regulates vesicle fusion by maintaining the readily releasable pool of secretory vesicles., PTM: N-glycosylated., similarity: Belongs to the major facilitator superfamily., subcellular location: Enriched in small synaptic vesicles and adrenal microsomes, not present in chromaffin granules. Associated with both insulin granules and synaptic-like microvesicles in insulin-secreting cells of the pancreas., subunit: Interacts with SYT1 in a calcium-dependent manner., function: Plays a role in the control of regulated secretion in neural and endocrine cells, enhancing selectively low-frequency neurotransmission. Positively regulates vesicle fusion by maintaining the readily releasable pool of secretory vesicles., PTM: N-glycosylated., similarity: Belongs to the major facilitator superfamily., subcellular location: Enriched in small synaptic vesicles and adrenal microsomes, not present in chromaffin granules. Associated with both insulin granules and synaptic-like microvesicles in insulin-secreting cells of the pancreas., subunit: Interacts with SYT1 in a calcium-dependent manner.,

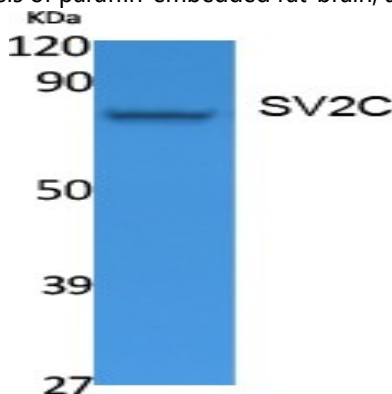
Research Area

ECM-receptor interaction;

Image Data



Immunohistochemical analysis of paraffin-embedded rat-brain, antibody was diluted at 1:100



Western Blot analysis of extracts from Jurkat cells, using SV2C Polyclonal Antibody. Secondary antibody was diluted at 1:20000

Product Name: SV2C Rabbit Polyclonal Antibody
Catalog #: APRab18464



Note

For research use only.