

Product Name: SUMO-1 Rabbit Polyclonal Antibody
Catalog #: APRab18438



Summary

Production Name	SUMO-1 Rabbit Polyclonal Antibody
Description	Rabbit Polyclonal Antibody
Host	Rabbit
Application	IF,IHC,WB,
Reactivity	Human,Mouse,Rat

Performance

Conjugation	Unconjugated
Modification	Unmodified
Isotype	IgG
Clonality	Polyclonal
Form	Liquid
Storage	Store at 4°C short term. Aliquot and store at -20°C long term. Avoid freeze/thaw cycles.
Buffer	Liquid in PBS containing 50% glycerol, 0.5% BSA and 0.02% New type preservative N.
Purification	Affinity purification

Immunogen

Gene Name	SUMO1 SUMO1; SMT3C; SMT3H3; UBL1; OK/SW-cl.43; Small ubiquitin-related modifier 1;
Alternative Names	SUMO-1; GAP-modifying protein 1; GMP1; SMT3 homolog 3; Sentrin; Ubiquitin-homology domain protein PIC1; Ubiquitin-like protein SMT3C; Smt3C; Ubiquitin-like protein
Gene ID	7341.0
SwissProt ID	P63165.The antiserum was produced against synthesized peptide derived from human Sumo1. AA range:1-50

Application

Dilution Ratio	WB 1:500 - 1:2000 IHC 1:100 - 1:300. IF 1:200 - 1:1000. ELISA: 1:20000. Not yet tested
-----------------------	--

Product Name: SUMO-1 Rabbit Polyclonal Antibody
Catalog #: AP Rab18438



in other applications.

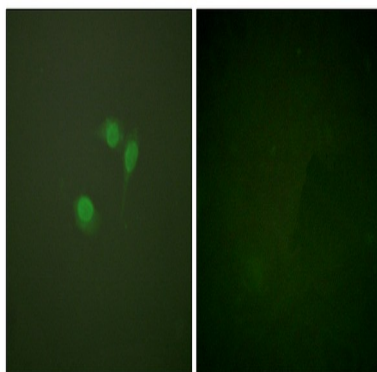
Molecular Weight 12kD

Background

This gene encodes a protein that is a member of the SUMO (small ubiquitin-like modifier) protein family. It functions in a manner similar to ubiquitin in that it is bound to target proteins as part of a post-translational modification system. However, unlike ubiquitin which targets proteins for degradation, this protein is involved in a variety of cellular processes, such as nuclear transport, transcriptional regulation, apoptosis, and protein stability. It is not active until the last four amino acids of the carboxy-terminus have been cleaved off. Several pseudogenes have been reported for this gene. Alternate transcriptional splice variants encoding different isoforms have been characterized. [provided by RefSeq, Jul 2008], caution: The sequence shown here is derived from an Ensembl automatic analysis pipeline and should be considered as preliminary data., function: Ubiquitin-like protein which can be covalently attached to target lysines as a monomer. Does not seem to be involved in protein degradation and may function as an antagonist of ubiquitin in the degradation process. Plays a role in a number of cellular processes such as nuclear transport, DNA replication and repair, mitosis and signal transduction. Involved in targeting RANGAP1 to the nuclear pore complex protein RANBP2. Covalent attachment to its substrates requires prior activation by the E1 complex SAE1-SAE2 and linkage to the E2 enzyme UBE2I, and can be promoted by an E3 ligase such as PIAS1-4, RANBP2 or CBX4., online information: SUMO protein entry, PTM: Cleavage of precursor form by SENP1 or SENP2 is necessary for function., similarity: Belongs to the ubiquitin family. SUMO subfamily., similarity: Contains 1 ubiquitin-like domain., subunit: Interacts with SAE2, UBE2I, RANBP2, PIAS1 and PIAS2. Interacts with PARK2. Covalently attached to a number of proteins such as PML, RANGAP1, HIPK2, SP100, p53, p73-alpha, MDM2, JUN, DNMT3B and TDG. Also interacts with HIF1A, HIPK2, HIPK3, CHD3, EXOSC9, RAD51 and RAD52.,

Research Area

Image Data

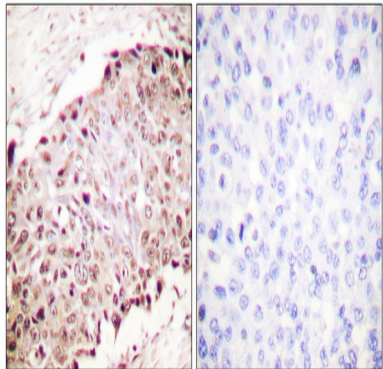


Immunofluorescence analysis of NIH/3T3 cells, using Sumo1 Antibody. The picture on the right is blocked with the

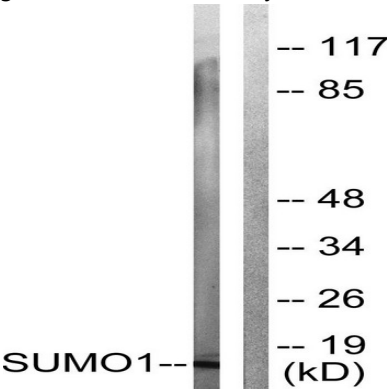
Product Name: SUMO-1 Rabbit Polyclonal Antibody
Catalog #: APRab18438



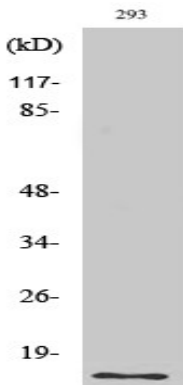
synthesized peptide.



Immunohistochemistry analysis of paraffin-embedded human breast carcinoma tissue, using Sumo1 Antibody. The picture on the right is blocked with the synthesized peptide.



Western blot analysis of lysates from 293 cells, using Sumo1 Antibody. The lane on the right is blocked with the synthesized peptide.



Western Blot analysis of various cells using SUMO-1 Polyclonal Antibody

Note

For research use only.