

**Product Name: ST2 Rabbit Polyclonal Antibody**  
**Catalog #: APRab18320**



## Summary

<b>Production Name</b>	ST2 Rabbit Polyclonal Antibody
<b>Description</b>	Rabbit Polyclonal Antibody
<b>Host</b>	Rabbit
<b>Application</b>	IHC,ELISA
<b>Reactivity</b>	Human,Rat,Mouse

## Performance

<b>Conjugation</b>	Unconjugated
<b>Modification</b>	Unmodified
<b>Isotype</b>	IgG
<b>Clonality</b>	Polyclonal
<b>Form</b>	Liquid
<b>Storage</b>	Store at 4°C short term. Aliquot and store at -20°C long term. Avoid freeze/thaw cycles.
<b>Buffer</b>	Liquid in PBS containing 50% glycerol, 0.5% BSA and 0.02% New type preservative N.
<b>Purification</b>	Affinity purification

## Immunogen

<b>Gene Name</b>	IL1RL1 DER4 ST2 T1
<b>Alternative Names</b>	Interleukin-1 receptor-like 1 (Protein ST2)
<b>Gene ID</b>	9173.0
<b>SwissProt ID</b>	Q01638.Synthetic peptide from human protein at AA range: 251-300

## Application

<b>Dilution Ratio</b>	IHC 1:100-1:300 ELISA: 1:20000
<b>Molecular Weight</b>	

## Background

The protein encoded by this gene is a member of the interleukin 1 receptor family. Studies of the similar gene in mouse suggested that this receptor can be induced by proinflammatory stimuli, and may be involved in the function of helper T

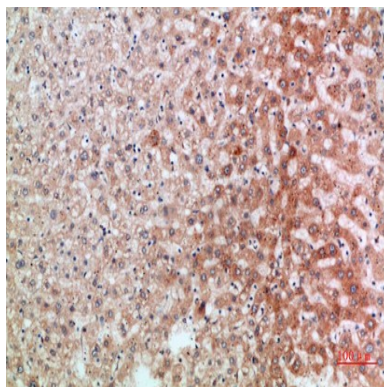
**Product Name: ST2 Rabbit Polyclonal Antibody**  
**Catalog #: AP Rab18320**



cells. This gene, interleukin 1 receptor, type I (IL1R1), interleukin 1 receptor, type II (IL1R2) and interleukin 1 receptor-like 2 (IL1RL2) form a cytokine receptor gene cluster in a region mapped to chromosome 2q12. Alternative splicing of this gene results in multiple transcript variants. [provided by RefSeq, Jul 2008],function:Receptor for interleukin-33 (IL-33), its stimulation recruits MYD88, IRAK1, IRAK4, and TRAF6, followed by phosphorylation of MAPK3/ERK1 and/or MAPK1/ERK2, MAPK14, and MAPK8. Possibly involved in helper T-cell function.,similarity:Belongs to the interleukin-1 receptor family.,similarity:Contains 1 TIR domain.,similarity:Contains 3 Ig-like C2-type (immunoglobulin-like) domains.,subunit:Interacts with MYD88, IRAK1, IRAK4, and TRAF6.,tissue specificity:Highly expressed in kidney, lung, placenta, stomach, skeletal muscle, colon and small intestine. Expression of isoform A is prevalent in the lung, testis, placenta, stomach and colon. However, isoform B is more abundant in the brain, kidney and the liver. Isoform C is not detected in brain, heart, liver, kidney and skeletal muscle.,

## Research Area

## Image Data



Immunohistochemical analysis of paraffin-embedded human-liver, antibody was diluted at 1:200

## Note

For research use only.