

Product Name: SSTR2 Rabbit Polyclonal Antibody
Catalog #: AP Rab18308



Summary

Production Name	SSTR2 Rabbit Polyclonal Antibody
Description	Rabbit Polyclonal Antibody
Host	Rabbit
Application	WB
Reactivity	Human,Mouse,Rat

Performance

Conjugation	Unconjugated
Modification	Unmodified
Isotype	IgG
Clonality	Polyclonal
Form	Liquid
Storage	Store at 4°C short term. Aliquot and store at -20°C long term. Avoid freeze/thaw cycles.
Buffer	Liquid in PBS containing 50% glycerol, 0.5% BSA and 0.02% New type preservative N.
Purification	Affinity purification

Immunogen

Gene Name	SSTR2
Alternative Names	Somatostatin receptor type 2 (SS-2-R) (SS2-R) (SS2R) (SRIF-1)
Gene ID	6752.0
SwissProt ID	P30874.The antiserum was produced against synthesized peptide derived from the Internal region of human SSTR2. AA range:220-270

Application

Dilution Ratio	WB 1:500-1:2000. ELISA: 1:10000.
Molecular Weight	40kD

Background

Somatostatin acts at many sites to inhibit the release of many hormones and other secretory proteins. The biologic effects

Product Name: SSTR2 Rabbit Polyclonal Antibody
Catalog #: APRab18308

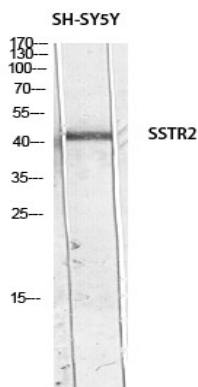


of somatostatin are probably mediated by a family of G protein-coupled receptors that are expressed in a tissue-specific manner. SSTR2 is a member of the superfamily of receptors having seven transmembrane segments and is expressed in highest levels in cerebrum and kidney. [provided by RefSeq, Jul 2008],function:Receptor for somatostatins-14 and -28. This receptor is coupled via pertussis toxin sensitive G proteins to inhibition of adenylyl cyclase. In addition it stimulates phosphotyrosine phosphatase and PLC via pertussis toxin insensitive as well as sensitive G proteins. In RIN-5F cells, this receptor inhibits calcium entry by suppressing voltage dependent calcium-channels.,similarity:Belongs to the G-protein coupled receptor 1 family.,subunit:The C-terminus interacts with SHANK1 PDZ domain.,tissue specificity:Cerebrum and kidney. In lesser amounts in jejunum, colon and liver.,

Research Area

Neuroactive ligand-receptor interaction;

Image Data



Western blot analysis of SH-SY5Y lysis using SSTR2 antibody. Antibody was diluted at 1:500. Secondary antibody was diluted at 1:20000

Note

For research use only.