

Product Name: SSH3 Rabbit Polyclonal Antibody
Catalog #: APRab18300



Summary

Production Name	SSH3 Rabbit Polyclonal Antibody
Description	Rabbit Polyclonal Antibody
Host	Rabbit
Application	WB,IHC,
Reactivity	Human,Mouse,Rat

Performance

Conjugation	Unconjugated
Modification	Unmodified
Isotype	IgG
Clonality	Polyclonal
Form	Liquid
Storage	Store at 4°C short term. Aliquot and store at -20°C long term. Avoid freeze/thaw cycles.
Buffer	Liquid in PBS containing 50% glycerol, 0.5% BSA and 0.02% New type preservative N.
Purification	Affinity purification

Immunogen

Gene Name	SSH3
Alternative Names	SSH3; SSH3L; Protein phosphatase Slingshot homolog 3; SSH-like protein 3; SSH-3L; hSSH-3L
Gene ID	54961.0
SwissProt ID	Q8TE77.The antiserum was produced against synthesized peptide derived from human SSH3. AA range:357-406

Application

Dilution Ratio	WB 1:500 - 1:2000. IHC 1:100 - 1:300. ELISA: 1:40000..
Molecular Weight	74kD

Product Name: SSH3 Rabbit Polyclonal Antibody
Catalog #: APRab18300



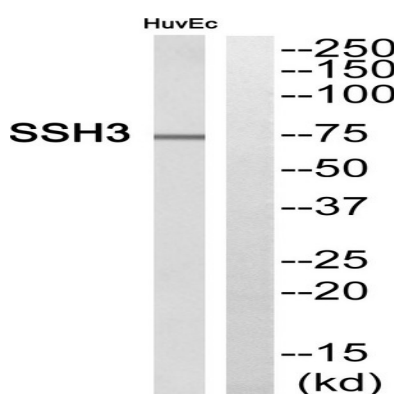
Background

The ADF (actin-depolymerizing factor)/cofilin family (see MIM 601442) is composed of stimulus-responsive mediators of actin dynamics. ADF/cofilin proteins are inactivated by kinases such as LIM domain kinase-1 (LIMK1; MIM 601329). The SSH family appears to play a role in actin dynamics by reactivating ADF/cofilin proteins in vivo (Niwa et al., 2002 [PubMed 11832213]).[supplied by OMIM, Mar 2008],catalytic activity:A phosphoprotein + H(2)O = a protein + phosphate.,catalytic activity:Protein tyrosine phosphate + H(2)O = protein tyrosine + phosphate.,function:Protein phosphatase which may play a role in the regulation of actin filament dynamics. Can dephosphorylate and activate the actin binding/depolymerizing factor cofilin, which subsequently binds to actin filaments and stimulates their disassembly.,miscellaneous:Tyrosine phosphatase activity has not been demonstrated for this protein to date.,PTM:Phosphorylated upon DNA damage, probably by ATM or ATR.,similarity:Belongs to the protein-tyrosine phosphatase family.,similarity:Contains 1 tyrosine-protein phosphatase domain.,subunit:Does not bind to, or colocalize with, filamentous actin.,

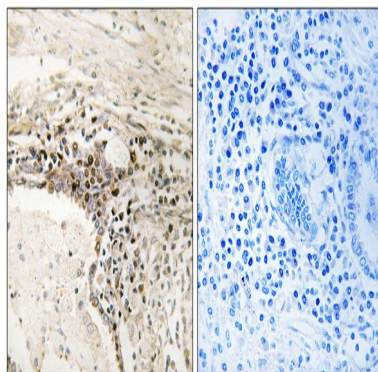
Research Area

Regulates Actin and Cytoskeleton;

Image Data

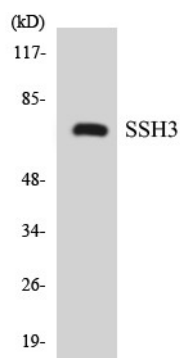


Western blot analysis of SSH3 Antibody. The lane on the right is blocked with the SSH3 peptide.



Immunohistochemistry analysis of paraffin-embedded human lung carcinoma, using SSH3 Antibody. The lane on the right is blocked with the SSH3 peptide.

Product Name: SSH3 Rabbit Polyclonal Antibody
Catalog #: APRab18300



Western blot analysis of the lysates from K562 cells using SSH3 antibody.



Western Blot analysis of various cells using SSH3 Polyclonal Antibody

Note

For research use only.