

**Product Name: SR-1E Rabbit Polyclonal Antibody**  
**Catalog #: APRab18245**



## Summary

|                        |                                  |
|------------------------|----------------------------------|
| <b>Production Name</b> | SR-1E Rabbit Polyclonal Antibody |
| <b>Description</b>     | Rabbit Polyclonal Antibody       |
| <b>Host</b>            | Rabbit                           |
| <b>Application</b>     | WB,ELISA                         |
| <b>Reactivity</b>      | Human                            |

## Performance

|                     |  |
|---------------------|--|
| <b>Conjugation</b>  | Unconjugated   |
| <b>Modification</b> | Unmodified   |
| <b>Isotype</b>      | IgG  |
| <b>Clonality</b>    | Polyclonal   |
| <b>Form</b>         | Liquid   |
| <b>Storage</b>      | Store at 4°C short term. Aliquot and store at -20°C long term. Avoid freeze/thaw cycles. |
| <b>Buffer</b>       | Liquid in PBS containing 50% glycerol, 0.5% BSA and 0.02% New type preservative N.       |
| <b>Purification</b> | Affinity purification  |

## Immunogen

|                          |  |
|--------------------------|--|
| <b>Gene Name</b>         | HTR1E  |
| <b>Alternative Names</b> | HTR1E; 5-hydroxytryptamine receptor 1E; 5-HT-1E; 5-HT1E; S31; Serotonin receptor 1E                        |
| <b>Gene ID</b>           | 3354.0   |
| <b>SwissProt ID</b>      | P28566.The antiserum was produced against synthesized peptide derived from human 5-HT-1E. AA range:101-150 |

## Application

|                         |                                       |
|-------------------------|---------------------------------------|
| <b>Dilution Ratio</b>   | WB 1:500 - 1:2000. ELISA 1:2000-20000 |
| <b>Molecular Weight</b> | 42kD                                  |

## Background

**Product Name: SR-1E Rabbit Polyclonal Antibody**  
**Catalog #: APRab18245**

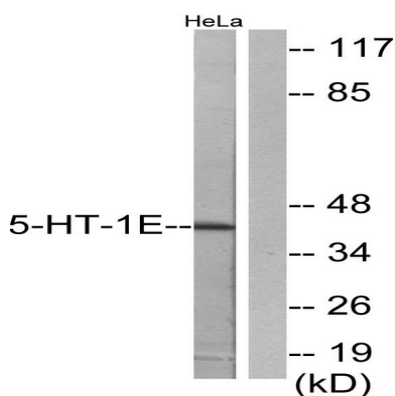


function: This is one of the several different receptors for 5-hydroxytryptamine (serotonin), a biogenic hormone that functions as a neurotransmitter, a hormone, and a mitogen. The activity of this receptor is mediated by G proteins that inhibit adenylate cyclase activity., similarity: Belongs to the G-protein coupled receptor 1 family. The activity of this receptor is mediated by G proteins that inhibit adenylate cyclase activity., similarity: Belongs to the G-protein coupled receptor 1 family.

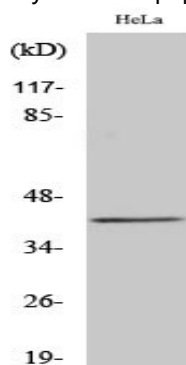
## Research Area

Neuroactive ligand-receptor interaction;

## Image Data



Western blot analysis of lysates from HeLa cells, using 5-HT-1E Antibody. The lane on the right is blocked with the synthesized peptide.



Western Blot analysis of various cells using SR-1E Polyclonal Antibody

## Note

For research use only.