

Product Name: Splicing factor 1 Rabbit Polyclonal Antibody
Catalog #: APRab18202



Summary

Production Name	Splicing factor 1 Rabbit Polyclonal Antibody
Description	Rabbit Polyclonal Antibody
Host	Rabbit
Application	IF,IHC,WB,
Reactivity	Human,Mouse

Performance

Conjugation	Unconjugated
Modification	Unmodified
Isotype	IgG
Clonality	Polyclonal
Form	Liquid
Storage	Store at 4°C short term. Aliquot and store at -20°C long term. Avoid freeze/thaw cycles.
Buffer	Liquid in PBS containing 50% glycerol, 0.5% BSA and 0.02% New type preservative N.
Purification	Affinity purification

Immunogen

Gene Name	SF1 SF1; ZFM1; ZNF162; Splicing factor 1; Mammalian branch point-binding protein; BBP;
Alternative Names	mBBP; Transcription factor ZFM1; Zinc finger gene in MEN1 locus; Zinc finger protein 162
Gene ID	7536.0
SwissProt ID	Q15637.The antiserum was produced against synthesized peptide derived from human SF1. AA range:48-97

Application

Dilution Ratio	WB 1:500 - 1:2000 IHC 1:100 - 1:300. IF 1:200 - 1:1000. ELISA: 1:20000. Not yet tested
-----------------------	--

Product Name: Splicing factor 1 Rabbit Polyclonal Antibody
Catalog #: APRab18202

in other applications.

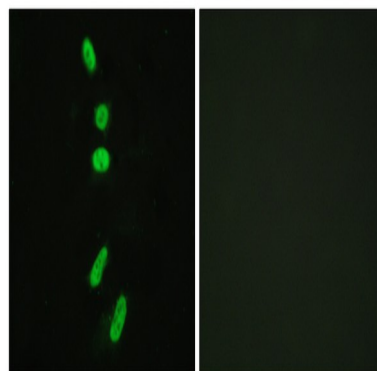
Molecular Weight 68kD

Background

This gene encodes a nuclear pre-mRNA splicing factor. The encoded protein specifically recognizes the intron branch point sequence at the 3' splice site, together with the large subunit of U2 auxiliary factor (U2AF), and is required for the early stages of spliceosome assembly. It also plays a role in nuclear pre-mRNA retention and transcriptional repression. The encoded protein contains an N-terminal U2AF ligand motif, a central hnRNP K homology motif and quaking 2 region which bind a key branch-site adenosine within the branch point sequence, a zinc knuckles domain, and a C-terminal proline-rich domain. Alternative splicing results in multiple transcript variants. [provided by RefSeq, Oct 2016], alternative products: Additional isoforms seem to exist, function: Necessary for the ATP-dependent first step of spliceosome assembly. Binds to the intron branch point sequence (BPS) 5'-UACUAAC-3' of the pre-mRNA. May act as transcription repressor., PTM: Phosphorylation on Ser-20 interferes with U2AF2 binding and spliceosome assembly. Isoform 6 is phosphorylated on Ser-463., similarity: Belongs to the BBP/SF1 family., similarity: Contains 1 CCHC-type zinc finger., similarity: Contains 1 KH domain., subunit: Binds U2AF2. Interacts with U1 snRNA. Binds EWSR1, FUS and TAF15., tissue specificity: Detected in lung, ovary, adrenal gland, colon, kidney, muscle, pancreas, thyroid, placenta, brain, liver and heart.,

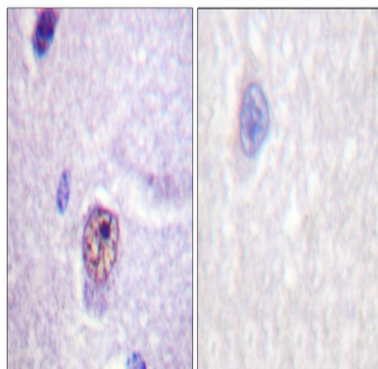
Research Area

Image Data

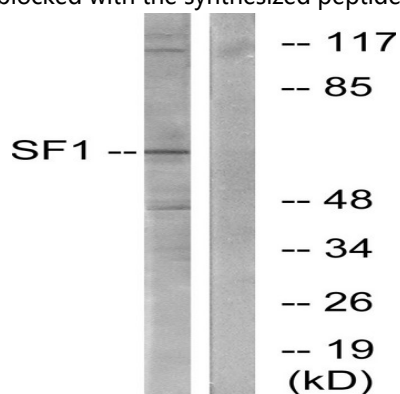


Immunofluorescence analysis of HeLa cells, using SF1 Antibody. The picture on the right is blocked with the synthesized peptide.

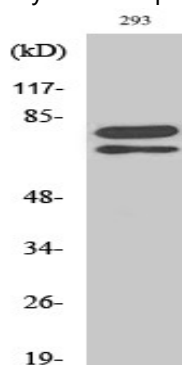
Product Name: Splicing factor 1 Rabbit Polyclonal Antibody
Catalog #: APRab18202



Immunohistochemistry analysis of paraffin-embedded human brain tissue, using SF1 Antibody. The picture on the right is blocked with the synthesized peptide.



Western blot analysis of lysates from COLO205 cells, using SF1 Antibody. The lane on the right is blocked with the synthesized peptide.



Western Blot analysis of various cells using Splicing factor 1 Polyclonal Antibody diluted at 1 : 500

Note

For research use only.