

Product Name: SPINK6 Rabbit Polyclonal Antibody
Catalog #: APRab18197



Summary

Production Name	SPINK6 Rabbit Polyclonal Antibody
Description	Rabbit Polyclonal Antibody
Host	Rabbit
Application	IHC,ELISA
Reactivity	Human,Rat,Mouse

Performance

Conjugation	Unconjugated
Modification	Unmodified
Isotype	IgG
Clonality	Polyclonal
Form	Liquid
Storage	Store at 4°C short term. Aliquot and store at -20°C long term. Avoid freeze/thaw cycles.
Buffer	Liquid in PBS containing 50% glycerol, 0.5% BSA and 0.02% New type preservative N.
Purification	Affinity purification

Immunogen

Gene Name	SPINK6
Alternative Names	SPINK6; Serine protease inhibitor Kazal-type 6; Kallikrein inhibitor
Gene ID	404203.0
SwissProt ID	Q6UWN8.The antiserum was produced against synthesized peptide derived from human SPINK6. AA range:13-62

Application

Dilution Ratio	IHC 1:100-1:300 ELISA: 1:40000
Molecular Weight	

Background

The protein encoded by this gene is a Kazal-type serine protease inhibitor that acts on kallikrein-related peptidases in the

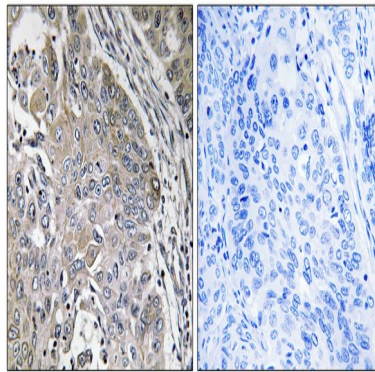
Product Name: SPINK6 Rabbit Polyclonal Antibody
Catalog #: APRab18197



skin. Two transcript variants the same protein have been found for this gene. [provided by RefSeq, Aug 2010],function:Probable serine protease inhibitor.,similarity:Contains 1 Kazal-like domain.,

Research Area

Image Data



Immunohistochemistry analysis of paraffin-embedded human lung carcinoma, using SPINK6 Antibody. The picture on the right is blocked with the synthesized peptide.

Note

For research use only.