

**Product Name: SMVT Rabbit Polyclonal Antibody**  
**Catalog #: APRab18038**



## Summary

<b>Production Name</b>	SMVT Rabbit Polyclonal Antibody
<b>Description</b>	Rabbit Polyclonal Antibody
<b>Host</b>	Rabbit
<b>Application</b>	WB,ELISA
<b>Reactivity</b>	Human,Rat,Mouse

## Performance

<b>Conjugation</b>	Unconjugated
<b>Modification</b>	Unmodified
<b>Isotype</b>	IgG
<b>Clonality</b>	Polyclonal
<b>Form</b>	Liquid
<b>Storage</b>	Store at 4°C short term. Aliquot and store at -20°C long term. Avoid freeze/thaw cycles.
<b>Buffer</b>	Liquid in PBS containing 50% glycerol, 0.5% BSA and 0.02% New type preservative N.
<b>Purification</b>	Affinity purification

## Immunogen

<b>Gene Name</b>	SLC5A6
<b>Alternative Names</b>	SLC5A6; SMVT; Sodium-dependent multivitamin transporter; Na(+)-dependent multivitamin transporter; Solute carrier family 5 member 6
<b>Gene ID</b>	8884.0
<b>SwissProt ID</b>	Q9Y289.The antiserum was produced against synthesized peptide derived from human SLC5A6. AA range:551-600

## Application

<b>Dilution Ratio</b>	WB 1:500-2000 ELISA 2000-20000
<b>Molecular Weight</b>	68kD

**Product Name: SMVT Rabbit Polyclonal Antibody**  
**Catalog #: APRab18038**

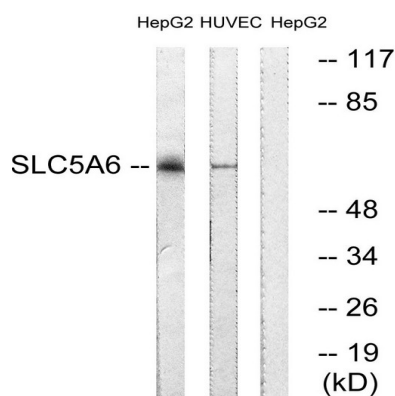


## Background

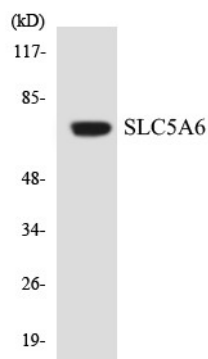
function:Transports pantothenate, biotin and lipoate in the presence of sodium.,similarity:Belongs to the sodium:solute symporter (SSF) (TC 2.A.21) family.,function:Transports pantothenate, biotin and lipoate in the presence of sodium.,similarity:Belongs to the sodium:solute symporter (SSF) (TC 2.A.21) family.,

## Research Area

## Image Data



Western blot analysis of lysates from HepG2 and HUVEC cells, using SLC5A6 Antibody. The lane on the right is blocked with the synthesized peptide.



Western blot analysis of the lysates from COLO205 cells using SLC5A6 antibody.

## Note

For research use only.