

Product Name: SMIF Rabbit Polyclonal Antibody
Catalog #: APRab18023



Summary

Production Name	SMIF Rabbit Polyclonal Antibody
Description	Rabbit Polyclonal Antibody
Host	Rabbit
Application	WB,ELISA
Reactivity	Human,Mouse

Performance

Conjugation	Unconjugated
Modification	Unmodified
Isotype	IgG
Clonality	Polyclonal
Form	Liquid
Storage	Store at 4°C short term. Aliquot and store at -20°C long term. Avoid freeze/thaw cycles.
Buffer	Liquid in PBS containing 50% glycerol, 0.5% BSA and 0.02% New type preservative N.
Purification	Affinity purification

Immunogen

Gene Name	DCP1A
Alternative Names	DCP1A; SMIF; mRNA-decapping enzyme 1A; Smad4-interacting transcriptional co-activator; Transcription factor SMIF
Gene ID	55802.0
SwissProt ID	Q9NPI6.The antiserum was produced against synthesized peptide derived from human DCP1A. AA range:111-160

Application

Dilution Ratio	WB 1:500 - 1:2000. ELISA: 1:20000
Molecular Weight	75kD

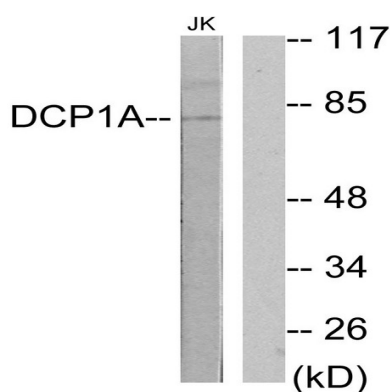
Background

Decapping is a key step in general and regulated mRNA decay. The protein encoded by this gene is a decapping enzyme. This protein and another decapping enzyme form a decapping complex, which interacts with the nonsense-mediated decay factor hUpf1 and may be recruited to mRNAs containing premature termination codons. This protein also participates in the TGF-beta signaling pathway. Alternative splicing of this gene results in multiple transcript variants. [provided by RefSeq, Feb 2014],function:Necessary for the degradation of mRNAs, both in normal mRNA turnover and in nonsense-mediated mRNA decay. Removes the 7-methyl guanine cap structure from mRNA molecules, yielding a 5'-phosphorylated mRNA fragment and 7m-GDP. Contributes to the transactivation of target genes after stimulation by TGFB1.,similarity:Belongs to the DCP1 family.,subcellular location:Predominantly cytoplasmic, in processing bodies (PB). Nuclear, after TGFB1 treatment. Translocation to the nucleus depends on interaction with SMAD4.,subunit:Forms a complex with EDC3, DCP2, DDX6 and EDC4/HEDLS, within this complex directly interacts with EDC3. Binds DCP1B, UPF1 and SMAD4. Part of a cytoplasmic complex containing proteins involved in mRNA decay, including XRN1 and LSM1. Interacts with PNRC2.,tissue specificity:Detected in heart, brain, placenta, lung, skeletal muscle, liver, kidney and pancreas.,

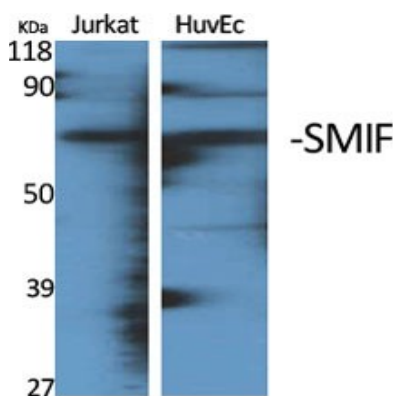
Research Area

RNA degradation;

Image Data



Product Name: SMIF Rabbit Polyclonal Antibody
Catalog #: APRab18023



Western Blot analysis of various cells using SMIF Polyclonal Antibody

Note

For research use only.