

**Product Name: SMF Rabbit Polyclonal Antibody**  
**Catalog #: APRab18018**



## Summary

<b>Production Name</b>	SMF Rabbit Polyclonal Antibody
<b>Description</b>	Rabbit Polyclonal Antibody
<b>Host</b>	Rabbit
<b>Application</b>	IHC,ELISA
<b>Reactivity</b>	Human,Rat,Mouse

## Performance

<b>Conjugation</b>	Unconjugated
<b>Modification</b>	Unmodified
<b>Isotype</b>	IgG
<b>Clonality</b>	Polyclonal
<b>Form</b>	Liquid
<b>Storage</b>	Store at 4°C short term. Aliquot and store at -20°C long term. Avoid freeze/thaw cycles.
<b>Buffer</b>	Liquid in PBS containing 50% glycerol, 0.5% BSA and 0.02% New type preservative N.
<b>Purification</b>	Affinity purification

## Immunogen

<b>Gene Name</b>	HMGXB3
<b>Alternative Names</b>	HMGXB3; KIAA0194; SMF; HMG domain-containing protein 3; HMG box-containing protein 3; Protein SMF
<b>Gene ID</b>	22993.0
<b>SwissProt ID</b>	Q12766.The antiserum was produced against synthesized peptide derived from human HMGXB3. AA range:131-180

## Application

<b>Dilution Ratio</b>	IHC 1:100-1:300 ELISA: 1:20000
<b>Molecular Weight</b>	

## Background

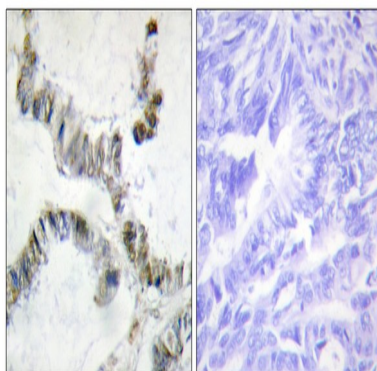
**Product Name: SMF Rabbit Polyclonal Antibody**  
**Catalog #: APRab18018**



This gene is one of the non-canonical high mobility group (HMG) genes. The encoded protein contains an HMG-box domain found in DNA binding proteins such as transcription factors and chromosomal proteins. [provided by RefSeq, Aug 2011],similarity:Contains 1 HMG box DNA-binding domain.,

## Research Area

## Image Data



Immunohistochemistry analysis of paraffin-embedded human colon carcinoma, using SMF Antibody. The picture on the right is blocked with the synthesized peptide.

## Note

For research use only.