

Product Name: SL9A2 Rabbit Polyclonal Antibody
Catalog #: APRab17938



Summary

Production Name	SL9A2 Rabbit Polyclonal Antibody
Description	Rabbit Polyclonal Antibody
Host	Rabbit
Application	WB
Reactivity	Human,Rat

Performance

Conjugation	Unconjugated
Modification	Unmodified
Isotype	IgG
Clonality	Polyclonal
Form	Liquid
Storage	Store at 4°C short term. Aliquot and store at -20°C long term. Avoid freeze/thaw cycles.
Buffer	Liquid in PBS containing 50% glycerol, and 0.02% New type preservative N.
Purification	Affinity purification

Immunogen

Gene Name	SLC9A2 NHE2
Alternative Names	
Gene ID	6549.0
SwissProt ID	Q9UBY0.Synthesized peptide derived from part region of human protein

Application

Dilution Ratio	WB 1:500-2000 ELISA 1:5000-20000
Molecular Weight	89kD

Background

This gene encodes a member of the sodium-hydrogen exchanger (NHE) protein family. These proteins are involved in sodium-ion transport by exchanging intracellular hydrogen ions to external sodium ions and help in the regulation of cell

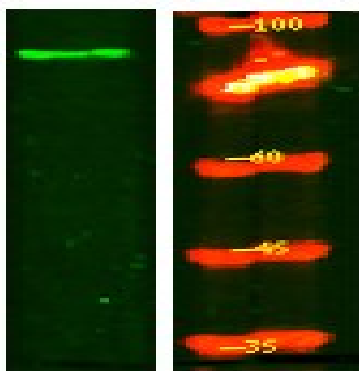
Product Name: SL9A2 Rabbit Polyclonal Antibody
Catalog #: APRab17938



pH and volume. The encoded protein is localized to the apical membrane and is involved in apical absorption of sodium. [provided by RefSeq, Jun 2016],caution:The number, localization and denomination of hydrophobic domains in the Na(+)/H(+) exchangers vary among authors.,function:Involved in pH regulation to eliminate acids generated by active metabolism or to counter adverse environmental conditions. Major proton extruding system driven by the inward sodium ion chemical gradient. Seems to play an important role in colonic sodium absorption.,PTM:Phosphorylated (Possible),similarity:Belongs to the monovalent cation:proton antiporter 1 (CPA1) transporter (TC 2.A.36) family.,tissue specificity:Expressed in skeletal muscle, colon and kidney. Lower levels in the testis, prostate, ovary, and small intestine.,

Research Area

Image Data



Western Blot analysis of Hela lysis, using primary antibody at 1:1000 dilution. Secondary antibody was diluted at 1:10000

Note

For research use only.