

**Product Name: Six2 Rabbit Polyclonal Antibody**  
**Catalog #: APRab17922**



## Summary

<b>Production Name</b>	Six2 Rabbit Polyclonal Antibody
<b>Description</b>	Rabbit Polyclonal Antibody
<b>Host</b>	Rabbit
<b>Application</b>	WB
<b>Reactivity</b>	Human,Mouse

## Performance

<b>Conjugation</b>	Unconjugated
<b>Modification</b>	Unmodified
<b>Isotype</b>	IgG
<b>Clonality</b>	Polyclonal
<b>Form</b>	Liquid
<b>Storage</b>	Store at 4°C short term. Aliquot and store at -20°C long term. Avoid freeze/thaw cycles.
<b>Buffer</b>	Liquid in PBS containing 50% glycerol, 0.5% BSA and 0.02% New type preservative N.
<b>Purification</b>	Affinity purification

## Immunogen

<b>Gene Name</b>	SIX2
<b>Alternative Names</b>	SIX2; Homeobox protein SIX2; Sine oculis homeobox homolog 2
<b>Gene ID</b>	10736.0
<b>SwissProt ID</b>	Q9NPC8.Synthesized peptide derived from Six2 . at AA range: 30-110

## Application

<b>Dilution Ratio</b>	WB 1:500-2000
<b>Molecular Weight</b>	

## Background

This gene is a member of the vertebrate gene family which encode proteins homologous to the Drosophila 'sine oculis' homeobox protein. The encoded protein is a transcription factor which, like other members of this gene

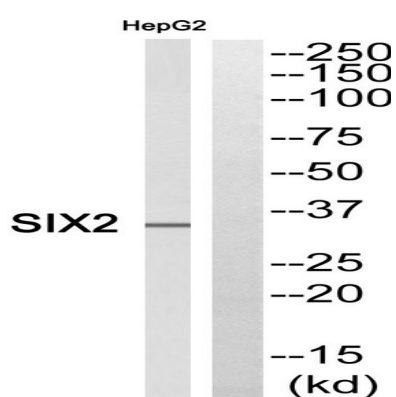
**Product Name: Six2 Rabbit Polyclonal Antibody**  
**Catalog #: AP Rab17922**



family, may be involved in limb or eye development. [provided by RefSeq, Dec 2008],function:May be involved in limb tendon and ligament development.,similarity:Belongs to the SIX/Sine oculis homeobox family.,similarity:Contains 1 homeobox DNA-binding domain.,tissue specificity:Strongly expressed in skeletal muscle.,

## Research Area

## Image Data



Western blot analysis of SIX2 Antibody. The lane on the right is blocked with the SIX2 peptide.

## Note

For research use only.